

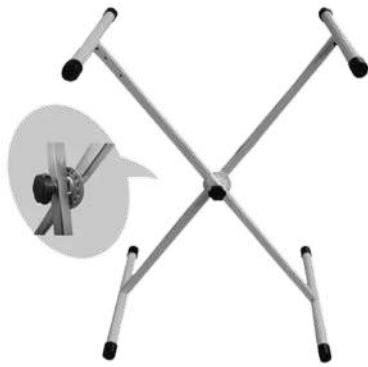


**BULLDOG HOMETGROWN **AUTOMOTIVE****  
**CATALOGUE**

---

[www.bulldogabrasives.co.za](http://www.bulldogabrasives.co.za)





**PART NO.** BHG0114

## X-TRESSLE FOLDING WORK STAND

- Adjustable tressle with locking system on the axis for different positions.
- Standard X-Tressle is galvanised with a metal axis locking system that folds away for easy storage.
- Supports up to 68kg.

**MATERIAL:** Steel | **COLOUR:** Grey Powder-Coated



**PART NO.** BHG0205

## PANEL REPAIR PAINT STAND, ROTATING

- Ideal for doors, bonnets, bumpers, wings, and spoilers.
- Compact design, able to handle the larger bonnets, tailgates, etc.
- Fully adjustable, rotates 180°.
- Measurements: 800×600×850mm.

**MATERIAL:** Steel Tubing | **COLOUR:** Grey Powder-Coated



**PART NO.** BHG0214

## MULTIFUNCTIONAL PAINT STAND

- Holds hoods, doors, lift gates, deck lids, and fenders.
- Single-hand operation with 7 precise locking positions.
- Steel frame, rotates panels 90° for painting.
- 4×4" castors (2 swivel with brakes) for easy movement.

**MATERIAL:** Steel | **COLOUR:** Grey Powder-Coated



**PART NO.** BHG0219

## WHEELMASTER PAINT STAND

- Four alloy wheels allow for easy rotation.
- Wheels rotate on cones; bars and cones are height adjustable (Dimensions: 830×830×780mm).
- Supports up to 100kg (25kg per cone).
- 4×100mm PU castors, 2 swivel with brakes.

**MATERIAL:** Steel | **COLOUR:** Grey Powder-Coated



**PART NO.** BHG0305A

## WORKSHOP TROLLEY PAINT STAND

- Workshop trolley with hanging rack for bumpers and exhaust pipes.
- Measurements: 895×685×1910mm, 90kg capacity.
- Includes shelves, tool and file boxes, elastic belts, and four 4-inch PU castors (two with brakes).

**MATERIAL:** Steel | **COLOUR:** Grey Powder-Coated



**PART NO.** BHG0311

## THREE-SHELF TOOL CART

- Heavy-gauge steel construction with durable powder-coated finish.
- Measurements: 840×400×800mm, supports up to 100kg.
- Four 100mm castor wheels (two lockable for stability).

**MATERIAL:** Heavy Gauge Steel | **COLOUR:** Grey Powder-Coated



**PART NO.** BHG0302

## FOLDABLE CART FOR PARTS MANAGEMENT

- Space-saving vertical shelving with foldable frame and bracket hook design.
- Adjustable shelves - 1020×610mm (40kg capacity each).
- Steel cart measuring at 1230×780×1900mm, equipped with hooks, arms, and braked castors.

**MATERIAL:** Steel | **COLOUR:** Grey Powder-Coated



**PART NO.**  
BHG0302



**PART NO.** BHG586.017

## DETAILING CART 3-SHELF

• 3-shelf mobile detailing cart with storage.

**Kit Includes:**

- Storage Buckets (2pcs)
- Towel Rack (1pc)
- Watering Can Hanger (6pcs)

**MATERIAL:** Polypropylene + Aluminum | **COLOUR:** Black

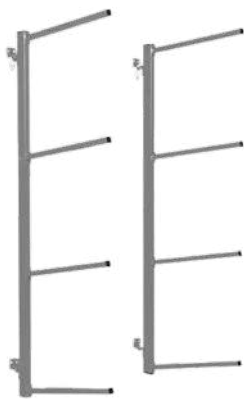


**PART NO.** BHG0318

## DETAILING CART TROLLEY

- Ergonomically designed cart (780×450×1100mm) for organising detailing chemicals, microfibres, brushes, etc.
- Features hangers for secure polishing machine storage and net shelves for easy product visibility.
- 8" solid wheel x2 and 4" castor wheel x2.

**MATERIAL:** Steel | **COLOUR:** Grey Powder-Coated



**PART NO.** BHG0404

## BUMPER RACK WALL-MOUNTED

- Foldaway wall-mounted bumper stand that saves space and holds up to 4 bumpers.
- Keeps painted bumpers off floor to prevent damage.
- Measurements: 1500×1000×500mm, 60 kg capacity (20kg per layer).

**MATERIAL:** Steel | **COLOUR:** Grey Powder-Coated



**PART NO.** BHG0408

## BUMPER RACK MOBILE, SINGLE-SIDED

- 6 adjustable arm bars with foam to protect painted and primed bumpers.
- Sturdy frame on four 4-inch PU castors, two lockable.
- Measurements: 1200×750×2150mm, 60kg capacity (10kg per layer).

**MATERIAL:** Steel | **COLOUR:** Grey Powder-Coated

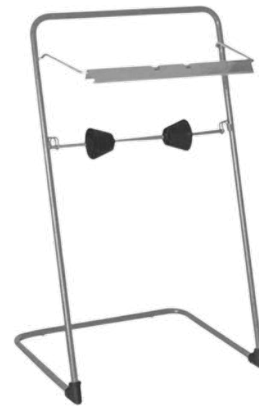


**PART NO.** BHG0501

## WINDSHIELD RACK WALL MOUNTED

- Wall-mounted stand for holding windshields safely; foam-padded posts protect glass.
- Holds up to 6 windshields (Max 90kg).
- Measuring 1200×750×2150mm, equipped with four 4-inch PU castors, two of which are lockable.

**MATERIAL:** Heavy Gauge Steel | **COLOUR:** Grey Powder-Coated



**PART NO.** BHG0702

## FLOOR STAND WIPER DISPENSER

- Free-standing steel dispenser for industrial wiping rolls, easy to move.
- Serrated edge for easy tearing; knock-down design for simple setup, Fits rolls up to 40 cm wide.
- Measurements: 840×460×440mm.

**MATERIAL:** Steel | **COLOUR:** Grey Powder-Coated



**PART NO.** BHG0622A

## MASKING FILM DISPENSER/CUTTER, 2-IN-1

- Mobile 2-in-1 masking film dispenser designed for easy one-person vehicle masking.
- Holds two rolls with precise cutting via U-profile rail.
- Durable steel design with smooth PU wheels; fits 4 m and 6 m rolls.

**MATERIAL:** Steel | **COLOUR:** Grey Powder-Coated



**PART NO.** BHG0649

## MASKING FILM DISPENSER, BOX-TYPE

- Wheels upright and tilts 90° for vertical or horizontal masking film use.
- Holds rolls up to 1400mm.
- Durable powder-coated steel with two 8-inch PU wheels for smooth workshop mobility.

**MATERIAL:** Steel | **COLOUR:** Grey Powder-Coated



**PART NO.** BHG0651

## MASKING FILM DISPENSER, MOBILE

- Holds masking paper rolls up to 1000mm; one person can mask a vehicle with cutter guide.
- Steel, space-saving design with grey powder-coating.
- Two 3-inch wheels; size 1230×270×330mm for easy mobility.

**MATERIAL:** Steel | **COLOUR:** Grey Powder-Coated



**PART NO.** BD005

## CAR INTERIOR PROTECTION KIT, DISPOSABLE

**Kit Includes:**

- Car seat cover
- Car steering wheel cover
- Gear shift cover
- Handbrake cover
- Car floor mat



**PART NO.** BHG356.024

## CRASH WRAP BLUE, SELF-ADHESIVE

- Protects damaged vehicles by sealing cracked glass, broken windows, and sprung doors.
- 0.6m×50m×75 microns PE wrap, durable and weather-resistant.
- High-visibility blue, self-adhesive for fast, secure application.



**PART NO.** BD002

## PLASTIC CAR COVER REUSABLE, 4.8MX7.5M

- Made from LDPE transparent plastic (4.8×7.5m, 30 microns thick).
- Weighs 999g and includes an elastic cord for a secure fit.
- Protects vehicles during bodywork or painting.



**PART NO. BHG302.015**

## **MASKING FILM ROLL PRE-TAPED, 550MMX33M**

- Pre-taped masking film for protecting automotive paintwork from dust and overspray.
- Translucent HDPE film (550mm×33m, 8 microns) for easy placement.
- 16mm tape, heat resistant up to 80°C for secure masking.



**PART NO. BHG302.018**

## **MASKING FILM ROLL PRE-TAPED, 1800MMX33M**

- Pre-taped masking film for protecting automotive paintwork from dust and overspray.
- Translucent HDPE film (1800mm×33m, 8 microns) for easy placement.
- 16mm tape, heat resistant up to 80°C for secure masking.



**PART NO.  
BHG302.015 - 0.18**



**PART NO.** BHG407.075

## **SPRAY PLATES** **METAL - WHITE, 100PCS**

- Metal spray plates for precise colour matching in all paint systems.
- White cards with black stripe for coverage assessment.
- Size: 148×105×0.17mm, 100 cards per box.



**PART NO.** BHG407.077

## **SPRAY PLATES** **METAL - GREY, 100PCS**

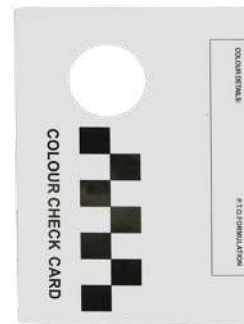
- Designed for precise colour matching in traditional and water-based paints.
- Grey cards with black stripe for coverage assessment.
- Size: 148×105×0.17mm, 100 cards per box.



**PART NO.** BHG407.078

## **SPRAY PLATES** **METAL - DARK GREY, 100PCS**

- For spray applications and colour matching in both solvent-based and waterborne paint systems.
- Dark Grey cards with black stripe for coverage assessment.
- Size: 148×105×0.17mm, 100 cards per box.



**PART NO.** BHG407.079

## **PAPER SPRAY CARDS** **WITH HOLE, 100PCS**

- Essential for colour matching and spray testing.
- Made from 200gsm double copper paper for base colour and clear coat visualisation.
- Size: 150×105mm, 100 cards per box.



**PART NO.** BHG490.117

## PAPER SPRAY CARDS 100PCS

- Ideal for accurate paint matching and testing.
- Crafted from durable 200gsm card stock.
- Size: 148×105×0.17mm, 100 cards per box.



**PART NO.** BHG0804

## DELUXE GUN HOLDER WALL-MOUNTED, MAGNETIC

- Heavy-duty magnetic holder with six magnets for secure attachment to metal surfaces.
- Holds two spray guns and two air hoses; rubber edges prevent damage.
- Steel, powder-coated design; size 200×120mm.



**PART NO.** BHG253.040

## CAULKING GUN ALUMINIUM MANUAL, 9"

- Lightweight aluminium body with smooth, easy operation.
- Durable steel handle with convenient ladder hook.
- 9-inch caulking gun fits 300ml sausage tubes for precise sealant and adhesive application.



**PART NO.** BHG258.027

## TUNGSTEN DENIBBLING BLOCK

- Precision tungsten steel block designed to remove dust nibs from paintwork.
- Compact (30×25×3mm) and lightweight (33g) for easy handling and control.
- Durable tool made for dust removal and achieving a smooth surface in body repair work.



**PART NO. BHG0231**

## MAGNETIC SPRAY PLATE HOLDER

- Metal sprayplate holder secures colour-matching cards during paint jobs.
- Rubber grip handle ensures comfort, precision, and prevents drops or smudges.
- Compact size (36.5×9.5×3cm) fits easily in any painter's toolkit.



**PART NO. BHG0235**

## LOCKING PLIER HOLDER/PIN

- Steel powder-coated locking plier pin for securing small car parts during paint jobs.
- Measures 275×98mm, providing a compact and practical holding solution.
- Simplifies painting by providing a dedicated space for pliers and tools.



**PART NO. BHG0235A**

## LOCKING PLIER HOLDER/PIN, MAGNETIC

- Holds small car parts securely and keeps them within easy reach during painting.
- Durable steel construction with powder-coated finish for long-lasting use.
- Compact 275×98mm size for convenient placement while fitting essential tools.



**PART NO. BHG0803A**

## SPRAY GUN HOLDER WALL-MOUNTED, MAGNETIC

- This spray gun holder supports a maximum weight of 4.5 kg.
- Vinyl-coated steel hooks protect spray gun finishes from scratches.
- Versatile mounting options: use magnet or install permanently with a self-tapping screw.



**PART NO.** BHG267.022

## NYLON BRUSH

- Durable nylon bristles suitable for multiple painting and application tasks.
- Poplar handle with a hanging hole for convenient storage.
- Compact 115×8mm size for comfortable grip and controlled strokes.



**PART NO.** BHG420.043

## SPRAY GUN CLEANING KIT, 23 PCS

**Kit Includes:**

- Long-handled angle wire brush, long-handled straight wire brush, medium-sized wire brush, Medium-sized brass brush
- Fine brushes, detail Brushes, plastic-handled brush
- Fine points
- Hobby knife holders
- 1x bottle of cleaning solution



**PART NO.** BHG427.053

## AIR HOSE PVC, 10MMX100M

- Durable PVC air hose with 300 PSI working pressure and 1,200 PSI burst pressure.
- 1/4" solid brass NPT fittings with bend restrictors to prevent kinking.
- Ideal for automotive, paint, construction, and general industrial usage.



**PART NO.** BHG571.015

## OVERSPRAY CLAY (180G)

- Weight: 180g
- Overspray bar removes overspray from paint, glass, and chrome surfaces.
- Essential product for automotive detailing and surface preparation.

PART NO. BHG654.007

# WATERBORNE JET BLOW GUN



  
**Bulldog**  
ABRASIVES & AUXILIARIES  
EXPECT MORE



**PART NO.** BHG581.037

## WINDING JET NOZZLE WITH VALVE

- High-velocity, uniform air stream for precise blow-off.
- ABS nozzle designed for safe and reliable operation, with a maximum temperature of 77°C and a burst pressure of 115 PSI.
- 100 PSI working pressure, suitable for controlled blow-off applications.



**PART NO.** BHG654.007

## WATERBORNE JET BLOW GUN

- Designed for drying waterborne paints.
- Operates at 2–4 bar with an airflow control valve, 1/4-inch inlet, and an air consumption rate of 11.5 CFM.

**BHG654.007** - Waterborne Jet Blow Gun

**BHG654.007/1** - Waterborne Jet Blow Gun, Filter

**BHG654.007/2** - Waterborne Jet Blow Gun, Filter Holder



**PART NO.** BHG655.010

## DRYER BLOW GUN STAND

- Holds two air dryer guns for efficient drying.
- 360° rotating stand with two spiral PU air hoses included.
- Spiral hose dimensions: 8×12×5mm.



**PART NO.** BHG505.017

## POLISHER WALL MOUNT

- Durable ABS plastic organiser for polishing machines.
- Middle layer stores discs and saves workshop space.
- Compact 600×100×260mm design for sturdy, easy access storage.



**PART NO.** BHG475.014

## TOUCH UP BRUSH, 100PCS

- Fibre non-drip tip for precise paint touch-ups, with a bendable neck.
- Ideal for automotive paint touch-ups and detailing.



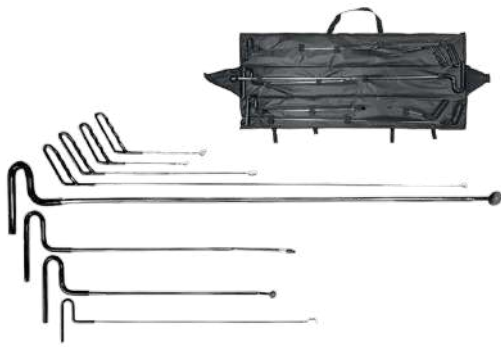
**PART NO.** BHG474.187

## 2-IN-1 TOUCH UP BOTTLE, 100PCS

- Quick and easy touch-ups for paint chips and minor damage.
- Dual applicator: fine needle tip for precision and soft brush for larger repairs.
- Transparent, squeezable bottle with sealing system; 100 units per box.



**PART NO.**  
BHG474.187



**PART NO.** BHG707.005

## DENT REMOVAL TOOL, 8PCS

**Kit Includes:**

- 2 Half-round bars
- 1 Round bar
- 1 Half-round pointed bar
- 2 Angled ball-headed bars
- 1 Pointed bar
- 1 Special-type hooked bar



**PART NO.** BHG739.022

## AUTO BODY REPAIR KIT, 7PCS

- Made from durable steel for long-lasting performance and reliability.
- Includes a variety of hammers and dollies, such as bumping, pick and finish, and reverse curve types.
- Spray-treated non-working faces, polished working faces, and fibreglass handles with a secure grip.



**PART NO.** BHG739.080

## AUTO BODY REPAIR KIT, 9PCS

- Includes a selection of hammers and dollies designed for effective auto body repairs.
- Constructed from durable forged steel to ensure strength, reliability, and long-lasting performance.
- Equipped with pecan wood handles that provide a secure grip and improved control.



**PART NO.** BHG739.056

## PANEL BEATING KIT, 7PCS

- Hammers and dollies with polished working faces and treated non-working faces for versatile panel repairs.
- Made from heat-treated steel to ensure long-lasting durability and performance.
- Features comfortable pecan wood handles for better grip and reduced fatigue during use.



**PART NO. BHG548.064**

## **WATERBORNE TACK BLUE CLOTH, 12PCS**

- Material: 90% Viscose, 10% Polyester
- Colour: Blue
- Size: 220×385mm
- Ideal for cleaning panels and removing dust in preparation for painting.



**PART NO. BHG552.074**

## **MULTIPURPOSE WIPES, 300 SHEETS**

- Made of 55% wood pulp and 45% polyester fibre, these versatile wipes efficiently absorb both water and oil.
- Measuring 300×350mm and available in white, green, or blue, they are suitable for a wide range of cleaning tasks.
- Each box contains 300 sheets.



**PART NO. BHG586.075**

## **UNIVERSAL PAD WASHER, 25L**

- Made from ABS and PP materials, weighing just 2.16kg for easy handling.
- Holds up to 25 litres, with dimensions of 400×330×280mm.
- Thoroughly cleans and rejuvenates all types of polishing pads, preparing them for the next use.





**PART NO.** BHG728.012

## HOT STAPLER PLASTIC REPAIR SYSTEM

- 1-phase 110 V or 230 V, 50/60 Hz; input current 0.08-0.2 A; output 0.8-1.2 V, 14-20 A.
- Hot stapler system enables quick, strong, and precise plastic welding repairs.
- Compact controller and wand suitable for automotive body plastics and general plastic repair.



**PART NO.** BHG728.021

## HOT STAPLER PLASTIC REPAIR SYSTEM

- 1-phase 110 V or 230 V, 50/60 Hz; input current 0.08-0.2 A; output 0.8-1.2 V, 14-20 A.
- Hot stapler system enables quick, strong, and precise plastic welding repairs.
- Compact controller and wand suitable for automotive body plastics and general plastic repair.

**Includes 1x Diagonal Cutter BHG728.021C**

**PART NO.** BHG711.044 (RS16), 045 (RS18)

## FLAT STAPLES 100PCS

**BHG711.044** - Flat Staples

- **Material:** Tungsten Alloy
- **Staple Size:** 0.6mm

**BHG711.045** - Flat Staples

- **Material:** Tungsten Alloy
- **Staple Size:** 0.8mm



**PART NO.** BHG711.046 (RS20), 047 (RS28)

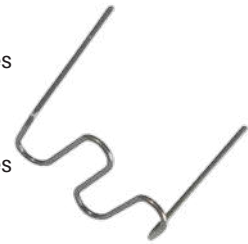
## FLAT WAVE STAPLES 100PCS

**BHG711.046** - Flat Wave Staples

- **Material:** Tungsten Alloy
- **Staple Size:** 0.6mm

**BHG711.047** - Flat Wave Staples

- **Material:** Tungsten Alloy
- **Staple Size:** 0.8mm



**PART NO.** BHG711.048 (RS38)

## INSIDE CORNER STAPLES, 100PCS

- **Material:** Tungsten Alloy
- **Staple Size:** 0.6mm



**PART NO.** BHG711.049 (RS46)

## OUTSIDE CORNER STAPLES, 100PCS

- **Material:** Tungsten Alloy
- **Staple Size:** 0.6mm





**PART NO.** BHG728.021C

## DIAGONAL CUTTER FOR BHG728.021

- The diagonal cutter for hot stapler plastic repair system (BHG728.021) is designed for smoothing plastic surfaces after repairs.
- Heated angular element enables precise smoothing of repaired plastic surfaces.
- Designed to create a clean, professional finish after plastic repairs.



**PART NO.** BHG834.012

## WINDSHIELD KIT 7PCS

**Kit Includes:**

- Square, stainless steel wire
- 2 Wire gripping handles
- Windshield removal tool
- Wire feeder tool
- Trim pad remover
- Windshield moulding release tool



**PART NO.** BHG835.043

## WINDSHIELD STAINLESS STEEL WIRE

- 22-meter braided stainless steel wire.
- Efficiently cuts through tough urethane adhesives, with each helix acting like a saw-style cutting tool.
- Speeds up windshield removal while minimising vehicle damage.



**PART NO.** BHG859.089

## HEAT GUN 1600W

- Voltage 230–240V, 50Hz, 1600W, two temperatures 380°C & 500°C, air 300–500L/min, LED power indicator, VDE EU plug with 2m cable, CE/GS/EMC certified.
- Powerful performance for precise heating and fast results.
- Suitable for paint removal and various surface tasks.

**NEW**



**PART NO. BHG162.062**

## **EVA SANDING BLOCK WITH HOOK, 7PCS**

**Kit Includes:**

- 279.4 (L) × 66.7 (W) × 34.9 (H) mm (2 pcs)
- 139.7 (L) × 63.5 (W) × 12.7 (H) mm (2 pcs)
- 273.1 (L) × 28.6 (D) mm (1 pc)
- 25.4 (L) × 34.9 (W) × 19.1 (H) mm (1 pc)
- 139.7 (L) × 66.7 (W) × 34.9 (H) mm (1 pc)

**NEW**



**PART NO. BHG400.165**

## **SPRAY CAN HOLDER**

- Designed for maximum spraying control, this ergonomic tool reduces finger fatigue while offering durable, reusable reliability.
- Universal fit for all standard spray cans.
- Size: 110×140mm

**NEW**



**PART NO. BHG742.040**

## **BODY LINE MARKING TOOL**

- This unique marking tool will help you trace and mark your vehicle's original body lines during sheet metal repairs.
- The included pencil traces the vehicle's original body lines and works easily on curved areas like wheel housings and doors.
- Size: 223×40×60mm

**PART NO. BHG742.040**





Joshua Doore Building  
4 Andries Street South,  
Wynberg, JHB  
2090

**Tel:** +27 (0) 11 786 5991

**Email:** [sales@bulldogabrasives.co.za](mailto:sales@bulldogabrasives.co.za)

**Website:** [www.bulldogabrasives.co.za](http://www.bulldogabrasives.co.za)