

AUTOMOTIVE

REPAIR & REFINISHING PRODUCTS

Featuring Bulldog's
New Releases

So you can make sure your
car gets nothing but the best



MIRKA

RANGE OF POLISHING & FINISHING PRODUCTS

BACKING PAD GRIP

FOR POLISHER

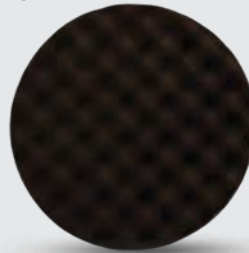
Part No. 8297902011
Attachment type: Grip
Firmness: Soft
Thread: M14
Size: 135mm



GOLDEN FINISH PAD-2

2 PACK, BLACK WAFFLE

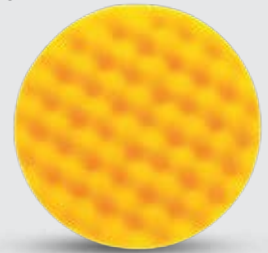
Part No. 7993115521
Attachment type: Grip
Diameter: 155mm
Thickness: 25mm



GOLDEN FINISH PAD-1

YELLOW WAFFLE

Part No. 7993415521
Attachment type: Grip
Diameter: 155mm
Thickness: 25mm



POLARSHINE® 5

FINISHING COMPOUND

Part No. 7990500111
Size: 1L
Colour: White
VOC: 23
Density: 1.05
pH: 7.5 - 8.5



POLARSHINE® 20

FINISHING COMPOUND

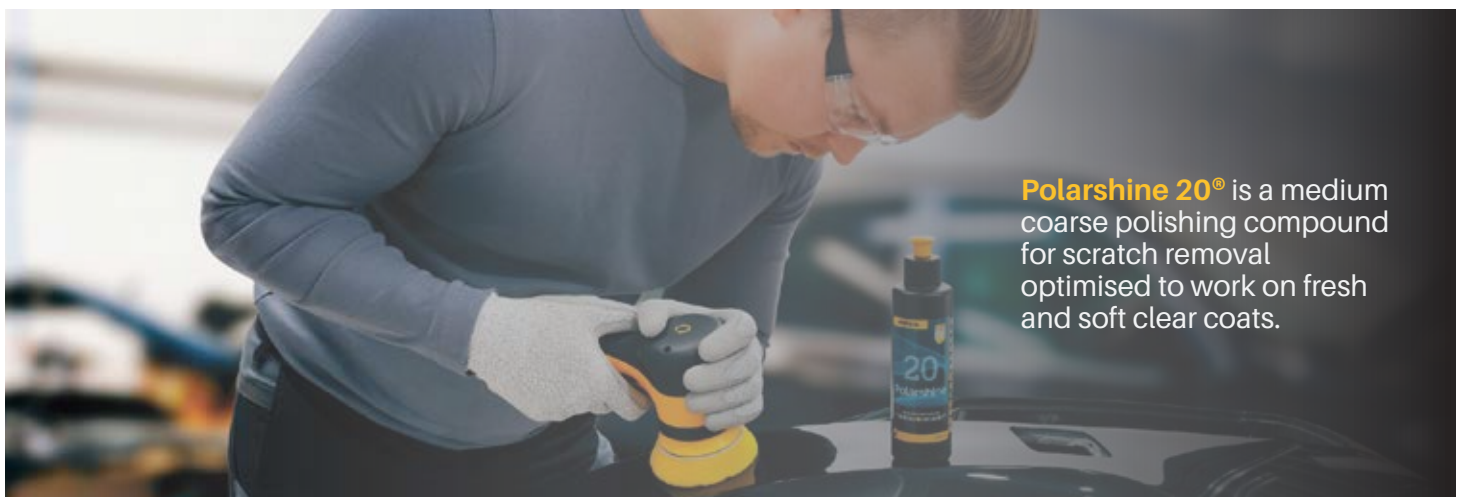
Part No. 7992000111
Size: 1L
Colour: White
VOC: 16
Density: 1.15
pH: 7.0 - 9.0



POLARSHINE® 35

FINISHING COMPOUND

Part No. 7992810111
Size: 1L
Colour: White
VOC: 16
Density: 1.45



Polarshine 20® is a medium coarse polishing compound for scratch removal optimised to work on fresh and soft clear coats.

SCAN TO VIEW OUR FULL RANGE OF MIRKA PRODUCTS



Tel: +27 (0) 11 786 5991 **Email:** sales@bulldogabrasives.co.za **Website:** www.bulldogabrasives.co.za

RUBBER SPREADER KIT

3-PIECE

Part No. VOS437

Spatula set in three widths:

- 90mm
- 105mm
- 115mm



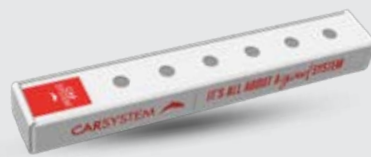
PDC EASY PAINT

5-PIECE KIT

Part No. VOS438

Parts:

Painting boxes, 2pcs
Magnets, 1 piece of foam (spacer)



CAN SCRAPER

PLASTIC

Part No. VOS439

Length: 31cm

Set of 5 can scrapers



MULTIFLOW

POLYESTER LIGHT FILLER
(INCL. HARDENER)

Part No. VOS440

Size: 3.3kg

Colour: Light Blue

VOC: 23

Density: 1.05

pH: 7.5 - 8.5



FLOW POLYESTER

LIGHT FILLER (INCL. HARDENER)

Part No. VOS416

Weight: 3.3kg

Colour: Yellow-green



MULTI LIGHT

BODY FILLER (INCL. HARDENER)

Part No. VOS029

Weight: 2.2kg (Dispenser type)

Colour: Light Beige



LIQUID POLYESTER

PUTTY (INCL. HARDENER)

Part No. VOS203

Weight: 1L Bottle

Colour: Beige



PLASTIC PRO

(INCL. HARDENER)

Part No. VOS126

Weight: 1kg Tin

Colour: Black



ELASTIC WEISS

POLYESTER FINE PUTTY
(INCL. HARDENER)

Part No. VOS002

Weight: 1kg

Colour: White



SCAN TO VIEW OUR FULL RANGE OF CARSYSTEM PRODUCTS



STRATA 6-12

ULTRA CUTTING CRÈME

Part No. PRES6-12 300
Presta Ultra Cutting Crème - 300g Tube

Part No. PRES6-12 500
Presta Ultra Cutting Crème - 500g

Part No. PRES6-12 1KG
Presta Ultra Cutting Crème - 1kg

Part No. PRES6-12
Presta Ultra Cutting Crème - 3kg

Benefits:

- Quick clean up contains no waxes, fillers, or silicone.
- Aggressive compound.
- Removes P1200 and finer sand scratches.



P1 ONE-STEP

CUTTING CRÈME

Part No. PRESP-1 300G
Presta P1 - 300g Tube

Part No. PRESP-1 500G
Presta P1 - 500g

Part No. PRESP-1 1KG
Presta P1 - 1kg

Part No. PRESP-1 5KG
Presta P1 - 5kg

Benefits:

- Works on difficult surfaces.
- Fast defect removal, eliminating P1500 grit sanding marks and finer.
- Versatile application.
- Efficient cutting performance.



Presta P-1 is an aggressive compound developed to remove P1500 grit and finer sanding scratches from soft and aged paint.



SCAN TO VIEW OUR FULL RANGE OF PRESTA PRODUCTS



BDX REFINISH X

BDX 6100

CLEAR COAT MS 2:1

Part No. BDX6100/500
BDX 6100 - 500ml

Part No. BDX6100/1
BDX 6100 - 1L

Part No. BDX6100/5
BDX 6100 - 5L

Benefits:

- Fast-drying.
- High-gloss finish.
- No baking required.
- Flexible curing options - Fast cure with BDX 7304 Hardener. Normal to slow cure with BDX 7403 Hardener.



PRODUCT SPOTLIGHT

BDX REFINISH

BDX REFINISH

RANGE OF REFINISHING PRODUCTS

BDX REFINISH

BDX 7304

FAST HARDENER

Part No. BDX7304/250
BDX 7304 - 250ml

Part No. BDX7304/500
BDX 7304 - 500ml

Part No. BDX7304/1
BDX 7304 - 1L

Part No. BDX7304/2.5
BDX 7304 - 2.5L



BDX 3010

AUTO SOFT BODY FILLER

Part No. BDX3010/1
BDX3010 - 1kg

Part No. BDX3010/5
BDX3010 - 5kg



BDX 5005

2K FILLING PRIMER HS 4:1 GREY

Part No. BDX5005/1
BDX5005 - 1L

Part No. BDX5005/4
BDX5005 - 4L



BDX 7403

NORMAL HARDENER, 500ML

Part No. BDX7403/500
Size: 500ml



BDX 8003

ACRYLIC THINNER NORMAL

Part No. BDX8003/500
BDX 8003 - 500ml

Part No. BDX8003/1
BDX 8003 - 1L

Part No. BD8003/5
BDX 8003 - 5L



BDX 5005 2K acrylic primer offers outstanding filling and levelling properties. It dries quickly and sands with ease, making it perfect for surface preparation prior to applying top-coat.

SCAN TO VIEW OUR FULL RANGE OF BDX REFINISH PRODUCTS



Tel: +27 (0) 11 786 5991 Email: sales@bulldogabrasives.co.za Website: www.bulldogabrasives.co.za

RANGE OF REFINISHING PRODUCTS

BRAKE CALIPER

PAINT SPRAY, 400ML AEROSOL

- Part No. HB512AY
Brake Caliper - Yellow
- Part No. HB512AR
Brake Caliper - Red
- Part No. HB512AB
Brake Caliper - Blue



955 TOUGH LINER

AND HARDENER

- Part No. HB955H
Tough Liner - Hardener, 600ml
- Part No. HB955B
Tough Liner - Black
- Part No. HB955W
Tough Liner - White



955 TOUGH LINER

ANTI-SLIP ADDITIVE

- Part No. HB955S
Size: 120g
Colour: Transparent



BODY 611

MULTI FILLER, BEIGE

- Part No. HB611/1
Body 611 - 900g
- Part No. HB611/4.5
Body 611 - 4.5kg



F220 BODYFINE

FINE FILLER, WHITE

- Part No. HB220/250
F220 Bodyfine - 250g
- Part No. HB220/1
F220 Bodyfine - 1kg



BODY 534

AUTO PRIMER, GREY, 4:1

- Part No. HB534/GREY1
Weight: 1L
Colour: Grey



340 PLASTOFIX

1K PLASTIC ADHESION PROMOTER

- Part No. HB340A
340 Plastofix - 400ml Aerosol
- Part No. HB340/PRIMER
340 Plastofix - 500ml
- Part No. HB340/PRIMER1LT
340 Plastofix - 1L



BODY 698

CLEAR HS SR 2:1

- Part No. HB698/1
Body 698 - 1L
- Part No. HB698/5
Body 698 - 5L



BODY 699

CLEAR HS SR 2:1

- Part No. HB699/500
Body 699 - 500ml
- Part No. HB699/1
Body 699 - 1L
- Part No. HB699/5
Body 699 - 5L



SCAN TO VIEW OUR FULL RANGE OF HB BODY PRODUCTS



SATA

German Engineering

SATA JETX

SPRAY GUNS

Part No. 1200170

JetX Basic Spray Gun, HVLP, 1.3 Nozzle

Part No. 1200451

JetX Basic Spray Gun, RP, 1.3 Nozzle

Part No. 1200203

JetX Digital Ready Spray Gun, HVLP, 1.3 Nozzle

Part No. 1200485

JetX Digital Ready Spray Gun, RP, 1.3 Nozzle

Part No. 1200196

JetX Digital Pro Spray Gun, HVLP, 1.3 Nozzle

Part No. 1200477

JetX Digital Pro Spray Gun, RP, 1.3 Nozzle



PRODUCT SPOTLIGHT

SATA

LCS WITH FLAT SIEVE

LINER CUP SYSTEM

Part No. 1195818 (125 µm)
LCS with flat sieve, 0.40 l

Part No. 1195826 (200 µm)
LCS with flat sieve, 0.40 l

Part No. 1195834 (125 µm)
LCS with flat sieve, 0.65 l

Part No. 1195850 (200 µm)
LCS with flat sieve, 0.65 l

Part No. 1195868 (125 µm)
LCS with flat sieve, 0.85 l

Part No. 1195876 (200 µm)
LCS with flat sieve, 0.85 l



QMR (FOR JETX)

QUICK MATERIAL REGULATOR

Part No. 1202019

Key Features and Benefits:

- Quick Material Adjustment
- Embossed Grip Area
- Push-to-Open Function
- Extended Range



The **QMR** enables fast, precise material flow adjustment and integrates seamlessly with the SATA jet X series, featuring clear markings and an embossed grip for better control.



SCAN TO VIEW OUR FULL RANGE OF SATA PRODUCTS





CAR INTERIOR

DETAILING KIT, 9PC

Part No. FC-ACS01-NT

Kit Includes:

- Microfibre Towels x3
- Microfibre Applicators x2
- Horse Hair Bristle Brush x1
- Detailing Brushes x3
- User Manual x1
- Storage Bag x1

Benefits:

- Natural boar hair, microfibre, and synthetic detailing brushes featuring ergonomic handles for comfortable, fatigue-free cleaning.
- Safe for seats, upholstery, dashboards, vents, and more.
- Ideal for both wet and dry cleaning.



PRODUCT SPOTLIGHT

FANTASTICLEAN

FANTASTICLEAN

RANGE OF MICROFIBRE CLOTHS



FantastiClean Super-Soft **Coral Fleece Towels** deliver premium care for polishing, waxing, drying, washing, buffing, and dusting.

MICROFIBRE

TEAR-AWAY TOWELS, 75PCS/ROLL

Part No. MC-SLJ121275-GR
Microfibre Towels - Grey

Part No. MC-SLJ121275-PK
Microfibre Towels - Pink

Part No. MC-SLJ121275-CG
Microfibre Towels - Cool Grey

Part No. MC-SLJ121275-BG
Microfibre Towels - Beige

Part No. MC-SLJ121275DGR
Microfibre Towels - Dim Grey

Part No. MC-SLJ121275-BL
Microfibre Towels - Blue

Part No. MC-SLJ121275-MS
Microfibre Towels - Moss Green

Part No. MCSLJ121275TAN
Microfibre Towels - Tan



CORAL FLEECE

DETAILING TOWELS, 20PCS/ROLL

Part No. FTCSHR141420BL
Coral Fleece Towel - Blue

Part No. FTCSHR141420BG
Coral Fleece Towel - Beige

Part No. FTCSHR141420TAN
Coral Fleece Towel - Tan



DETAILING CLOTHS

MICROFIBRE CLOTHS, 36PCS/ROLL

Part No. EUSLJLS161636GR
Colour: Grey

Dimensions: 40 cm x 40 cm



DOUBLE-SIDED

MICROFIBRE CLOTHS, 36PCS/ROLL

Part No. FCSLJQPG121836G
Colour: Grey

Dimensions: 45 cm x 30 cm



GLASS CLEANING

MICROFIBRE CLOTHS, 20PCS/ROLL

Part No. FC-MGC20
Colour: Blue

Size: 40cm x 30cm



SCAN TO VIEW OUR FULL RANGE OF FANTASTICLEAN PRODUCTS



Tel: +27 (0) 11 786 5991 **Email:** sales@bulldogabrasives.co.za **Website:** www.bulldogabrasives.co.za

BULLDOG HOMEGROWN

RANGE OF SPRAY GUNS & ATTACHMENTS



H-827P

HVLP SPRAY GUN

Part No. H827P/E1.4

1.4mm Spray gun

Part No. H827P/E1.7

1.7mm Spray gun

Part No. H827P/E2.0

2.0mm Spray gun



H-827P NOZZLE KIT

FOR H-827P SPRAY GUN

Part No. H827P/1.4 NOZ

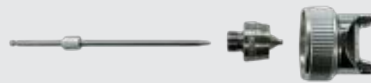
1.4mm Nozzle Kit

Part No. H827P/1.7 NOZ

1.7mm Nozzle Kit

Part No. H827P/2.0 NOZ

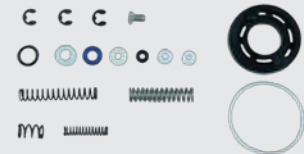
2.0mm Nozzle Kit



H-827P REPAIR KIT

FOR H-827P SPRAY GUN

Part No. H827P/REP



H827P/E CUP

FOR H827P/E SPRAY GUN

Part No. H827P/ECUP



PS-6 STONECHIP

GUN

Part No. EC1

Rated Pressure: 30-120 PSI

Maximum Pressure: 150 PSI

Air Inlet Size: 1/4"



EC SK-100

SPRAY GUN

Part No. EC2

1.3mm Spray gun

Part No. EC3

1.4mm Spray gun

Part No. EC4

1.7mm Spray gun



The **H-827 Spray Gun** is easy to use and ideal for most automotive painting, furniture painting, and equipment painting.



SCAN TO VIEW OUR FULL RANGE OF BULLDOG HOMEGROWN PRODUCTS

Tel: +27 (0) 11 786 5991 Email: sales@bulldogabrasives.co.za Website: www.bulldogabrasives.co.za

BULLDOG HOMEGROWN

RANGE OF PRODUCTS



EC SK-100 NOZZLE SET

FOR EC SK-100 SPRAY GUN

Part No. EC6

1.3mm Nozzle set

Part No. EC7

1.4mm Nozzle set

Part No. EC8

1.7mm Nozzle set



EC SK-100 CUP

FOR SPRAY GUN

Part No. EC9



QUICK COUPLER

FOR SPRAY GUNS/PNEUMATIC TOOLS

Part No. EC10

Thread: 1/4" Female

Size: 10mm

Material: Plastic

Part No. EC15

Thread: 1/4" Male

Size: 10mm

Material: Plastic



EC CONNECTOR, 10MM

FOR SPRAY GUNS / PNEUMATIC TOOLS

Part No. EC11

1/4" Male Thread

Part No. EC12

10mm Male into Hose

Part No. EC13

1/4" Female Thread

Part No. EC14

1/4" Male Thread
10mm into Hose



ROLOC, SCREW-TYPE

ALOX DISCS, 20PCS (50MM)

Part No. RLC50P40

Grit P40, 50mm

Part No. RLC50P60

Grit P60, 50mm

Part No. RLC50P80

Grit P80, 50mm

Part No. RLC50P120

Grit P120, 50mm



ROLOC, SCREW-TYPE

ALOX DISCS, 20PCS (75MM)

Part No. RLC75P40

Grit P40, 75mm

Part No. RLC75P60

Grit P60, 75mm

Part No. RLC75P80

Grit P80, 75mm

Part No. RLC75P120

Grit P120, 75mm



MICROFIBRE CLOTHS

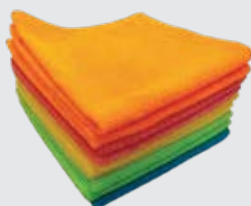
200GSM, 380MMX380MM

Part No. BD018

Pack of 10 cloths - Assorted Colours

Size: 380 x 380mm

GSM: 200



FLAT FOAM ABRASIVE PADS

DOUBLE-SIDED PAD

Part No. DS-6

Grit 600, Red

Part No. DS-8

Grit 800, Orange

Part No. DS-10/12

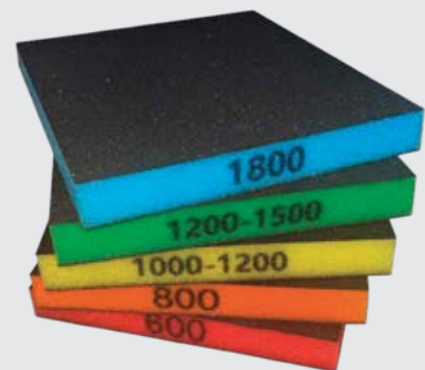
Grit 1000-1200, Yellow

Part No. DS-12/15

Grit 1200-1500, Green

Part No. DS-18

Grit 1800, Blue



SCAN TO VIEW OUR FULL RANGE OF BULLDOG HOMEGROWN PRODUCTS



Tel: +27 (0) 11 786 5991 Email: sales@bulldogabrasives.co.za Website: www.bulldogabrasives.co.za

SPRAY GUARD

RANGE OF ABRASIVES & TAPES



WATERPAPER SHEETS

WET AND DRY SHEETS

Part No. 2C10105060 Grit P60	Part No. 2C10105051 Grit P500
Part No. 2C10105080 Grit P80	Part No. 2C10105061 Grit P600
Part No. 2C10105010 Grit P100	Part No. 2C10105081 Grit P800
Part No. 2C10105012 Grit P120	Part No. 2C10105092 Grit P1000
Part No. 2C10105015 Grit P150	Part No. 2C10105093 Grit P1200
Part No. 2C10105018 Grit P180	Part No. 2C10105094 Grit P1500
Part No. 2C10105022 Grit P220	Part No. 2C10105095 Grit P2000
Part No. 2C10105032 Grit P320	Part No. 2C10105096 Grit P2500
Part No. 2C10105037 Grit P360	Part No. 2C10105097 Grit P3000
Part No. 2C10105041 Grit P400	



MASKING TAPE

HIGH ADHESION, GREEN CORE

Part No. SG18 Masking Tape - 18mm x 40m
Part No. SG24 Masking Tape - 24mm x 40m
Part No. SG36 Masking Tape - 36mm x 40m
Part No. SG48 Masking Tape - 48mm x 40m



Spray Guard **Masking Tape** is a versatile, high-adhesion tape designed for professional and DIY applications.

SCAN TO VIEW OUR FULL RANGE OF SPRAY GUARD PRODUCTS



Tel: +27 (0) 11 786 5991 Email: sales@bulldogabrasives.co.za Website: www.bulldogabrasives.co.za

CARNAUBA

WAX CLEANER, 230GRAMS

Part No. G02003

Size: 230 grams



AVALANCHE

EXTREME SNOW FOAM

Part No. G03003

Avalanche - 473ml

Part No. G03023

Avalanche - 3.78L



DISSOLVE

WATER SPOT REMOVER

Part No. G03001

Dissolve - 473ml Spraybottle

Part No. G03022

Dissolve - 3.78L



BLEED

IRON AND FALLOUT REMOVER

Part No. G03002

Bleed - 473ml Spraybottle

Part No. G03024

Bleed - 3.78L



GLOSSLOCK

CERAMIC CRYSTAL LIQUID WAX

Part No. G02001

Glosslock - 473ml

Part No. G02002

Glosslock - 3.78L



NO STREAK

PREMIUM GLASS CLEANER

Part No. G03004

No Streak - 473ml Spraybottle

Part No. G03027

No Streak - 3.78L



NOIR

SUPERIOR TYRE GEL

Part No. G03010

Noir - 473ml

Part No. G03033

Noir - 3.78L



BLAST

ENGINE SURFACE CLEANER

Part No. G03006

Blast - 473ml Spraybottle

Part No. G03029

Blast - 3.78L



REVIVEX

PLASTIC RESTORER

Part No. G03008

Blast - 300ml

Part No. G03025

Blast - 3.78L



SCAN TO VIEW OUR FULL RANGE OF GLANZLAB PRODUCTS



HEADLIGHT RENOVATION KIT

Part No. G06003



HEADLIGHT RENOVATION LIQUID

Part No. G06004
Size: 600ml



PROFESSIONAL SNOW FOAM CANNON

Part No. G10006
Size: 1L



CAR WASH BUCKET HEAVY-DUTY PLASTIC

Part No. G10033



CORAL VELVET EXTRA-THICK DRYING TOWEL

Part No. G12005
Size: 60cm x 90cm
GSM: 800 GSM



MICROFIBRE PREMIUM CAR WASH MITT

Part No. G12007
Size: 27cm x 20cm



The Glanzlab **Car Wash Bucket** is built from high-strength plastic polymers, ensuring the bucket remains rigid and warp-free over years of use.



SCAN TO VIEW OUR FULL RANGE OF GLANZLAB PRODUCTS



CHENILLE

MICROFIBRE WASH MITT

Part No. G12008

Size: 25cm x 22cm



SPRAY NOZZLE SET

FOR PROFESSIONAL SNOW FOAM CANNON

Part No. G0001

Set of 5 Nozzles



KARCHER K

PRESSURE WASHER ADAPTER

Part No. G0006



B DECKER (BOSCH)

PRESSURE WASHER ADAPTER

Part No. G0007



AR PATRIOT

PRESSURE WASHER ADAPTER

Part No. G0008



STIHL

PRESSURE WASHER ADAPTER

Part No. G0009



LAVOR

PRESSURE WASHER ADAPTER

Part No. G0010



B 3/8" ADAPTER

FOR PROFESSIONAL SNOW FOAM CANNON

Part No. G0011



B 1/4" ADAPTER

FOR PROFESSIONAL SNOW FOAM CANNON

Part No. G0012



SCAN TO VIEW OUR FULL RANGE OF GLANZLAB PRODUCTS



BELT SANDER PRO

HIG-SPEED, COMPOSITE

Part No. HSUHAS706
Belt Size: 10mm x 330mm
Free Speed: 18 000 rpm
Length: 325mm



AIR BODY SAW

SUPER DUTY, VIBRATION DAMPED

Part No. HSUHCTBS220
Stroke Length: 11mm
Cutting Capacity Steel Plate: 5mm
Stroke per Minute: 5000spm
Length: 270mm



DIE GRINDER

COMPOSITE, PISTOL TYPE

Part No. HSUHAD1090
Horsepower: 0.35 HP
Collet Capacity: 6mm
Length: 120mm



IMPACT WRENCH

TWIN TURBO SERIES, PALM

Part No. HSUHIWA04500T
Square Drive: 1/2 "
Free Speed: 7500 rpm
Max Torque: 405 fb.lb
Length: 85mm
Head: Swivel Head



IMPACT WRENCH

TWIN TURBO SERIES, PALM

Part No. HSUHIWP04500T
Square Drive: 1/2 "
Free Speed: 7500 rpm
Max Torque: 405 fb.lb
Length: 85mm



POLISHER

COMPOSITE, PISTOL TYPE

Part No. HSUHASP1062
Horsepower: 0.38 HP
Pad Size: 76mm
Free Speed: 5500 rpm
Length: 130mm



ANGLE POLISHER

(WITHOUT PAD)

Part No. HSUHAS872N
Pad Size: 178mm
Free Speed: 2500 rpm
Length: 328mm



RATCHET WRENCH

HEAVY DUTY, ADJUSTABLE HEAD

Part No. HSUHRW11474
Square Drive: 1/2 "
Free Speed: 160 rpm
Max Torque: 70ft.lb (95 Nm)



ORBITAL SANDER

RANDOM, CENTRAL VACUUM

Part No. HSUHAS525CV6
Orbital Sander - 150mm, 2.5mm
Part No. HSUHAS505CV6
Orbital Sander - 150mm, 5mm



SCAN TO VIEW OUR FULL RANGE OF HSUTECH PRODUCTS



0.3HP MULTI TOOL BODY

WITH PLASTIC BLOW MOULD CASE

Part No. HSU/MTB

Attachments:

Part No. HSU/MT1

0.3HP Low-Speed Drill

Part No. HSU/MT2

0.3HP Angle Grinder/ Cut-off Tool

Part No. HSU/MT4

0.3HP Straight Die Grinder

Part No. HSU/MT5

0.3HP Multifunctional Ratchet Wrench

Part No. HSU/MT6

0.3HP Angle Die Grinder

Part No. HSU/MT7

0.3HP Angle Sander

Part No. HSU/MT8

0.3HP Angle Polisher

Part No. HSU/MT9

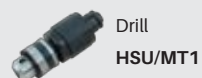
0.3HP Angle Orbital Sander

Part No. HSU/MT10

0.3HP Angle Low-Speed Drill

Plastic Blow Mould Case:

Part No. HSU/MTC



Drill

HSU/MT1



Disc Sander

HSU/MT7



Angle Grinder

HSU/MT2



Angle Polisher

HSU/MT8



Die Grinder

HSU/MT4



Angle Orbital Sander

HSU/MT9



Ratchet Wrench

HSU/MT5



Angle Drill

HSU/MT10



Angle Die Grinder

HSU/MT6



PRODUCT SPOTLIGHT

HSUTECH

CAR
SYSTEM®



Part No. VOS440

MULTI FLOW

POLYESTER LIGHT FILLER, 3.3KG

Discover the new **Multi Flow Filler**
from Carsystem

The Carsystem Multi Flow is an ultra-light polyester multifunctional putty with a self-levelling, pore-free surface. It provides excellent adhesion on common metal surfaces, wood, GRP and 2-comp.



Quick
Curing



Multi-Surface
Compatibility



Versatile
Performance



Lightweight
Application



Tel: +27 (0) 11 786 5991
Email: sales@bulldogabrasives.co.za
Website: www.bulldogabrasives.co.za