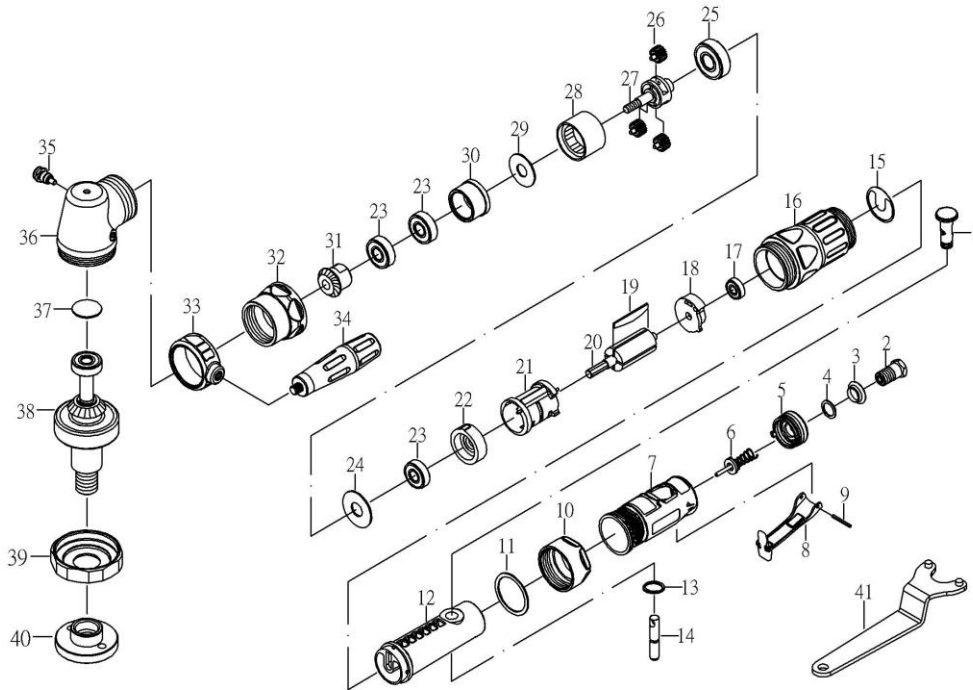


7" ANGLE POLISHER



PARTS LIST

NO.	PART NO.	DESCRIPTION	QTY
1	ST87101AS	REGULATOR SET	1
2	ST87104	INLET BUSHING	1
3	ST20036	MUFFLER BODY	1
4	LDB250R43	WASHER	1
5	ST87106AS	EXHAUST SLEEVE SET	1
6	ST288315AS	VALVE SET	1
7	ST87113	PROTECTING RUBBER	1
8	ST200A13	LEVER	1
9	12012.1	PIN	1
10	ST85005	CLAMP NUT	1
11	ST85006	WASHER	1
12	ST87118	HOUSING	1
13	OB-30	SNAP RING	1
14	ST87157AS	VALVE STEM SET	1
15	ST87120	PACKING	1
16	ST87121-1	HOUSING	1
17	21024	BEARING (608ZZ)	1
18	ST87123	REAR PLATE	1
19	ST85031	ROTOR BLADE	5
20	ST87125	ROTOR	1
21	ST87128AS	CYLINDER SET	1

Consumable parts No. 6, 17, 19, 20, 23, 26, 28, 31, 38

NO.	PART NO.	DESCRIPTION	QTY
22	ST87129	FRONT PLATE	1
23	24531A	BEARING (6200ZZ)	3
24	ST87131	WASHER	1
25	ST87036A	BEARING (6202ZZ)	1
26	ST87135AS	IDLER GEAR SET (16T)	3
27	ST87136	GEAR PLATE	1
28	ST87137	THREAD RING GEAR (42T)	1
29	ST87159	WASHER (15.7*25.8*1.8T)	1
30	ST87138	BEARING BUSHING	1
31	ST87239	BEVEL GEAR (15T)	1
32	ST87140-1	CLAMP NUT	1
33	ST87141-1	HANDLE LINK	1
34	BT80438-12.5	HANDLE	1
35	ST87144AS	SPINDLE LOCK SET	1
36	ST87143A-1AS	ANGLE HOUSING SET	1
37	70412-1	SPACER	1
38	ST87255AS	SHAFT SET	1
39	ST87161	CLAMP NUT	1
40	ST77153	DISC NUT (5/8")	1
41	BT87057.1	DISC SPANNER (180mm)	1

HAS-872N

DEC. 2023