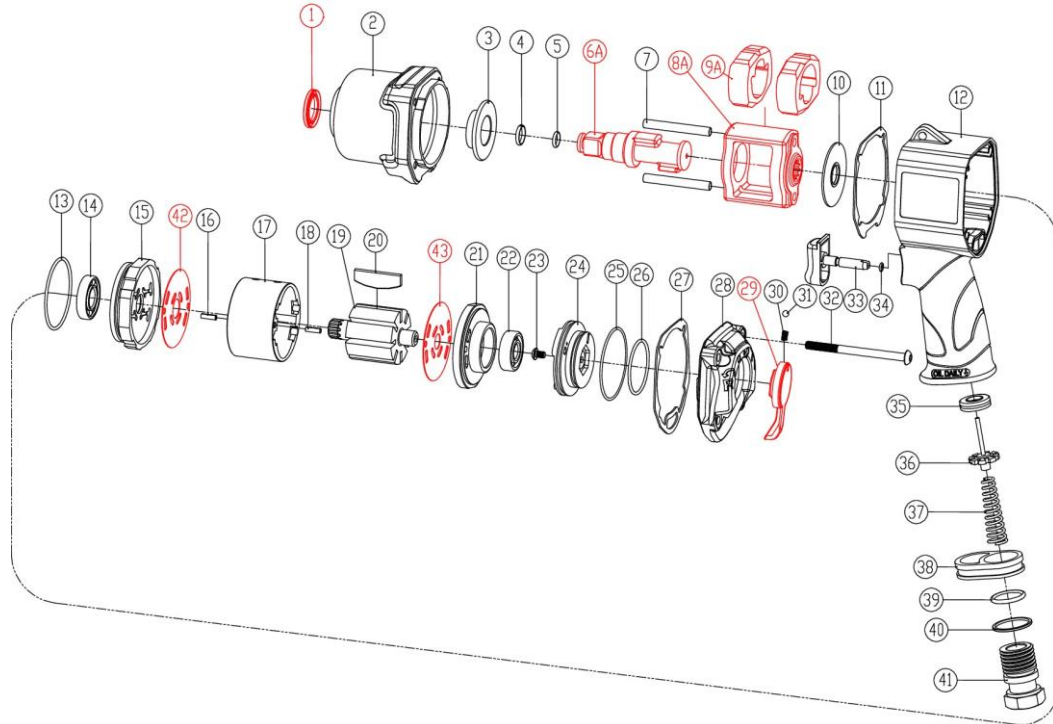


1/2" AIR IMPACT WRENCH (Twin Hammer)



UNIT PRICE (US\$/PC) (FOB Taiwan)	INDEX NO.	PARTS NO.	DESCRIPTION	Q'TY
3	1	12891TA01	Oil Seal	1
5.9	2	12891TA02	Hammer Case	1
4.8	3	12891TA03	Bushing	1
0.3	4	12891TA04	Anvil Collar	1
0.3	5	12891TA05	O-Ring	1
16.3	6	12891TA06A	Anvil (1/2" DR)	1
0.7	7	12891TA07	Hammer Pin	2
14.5	8	12891TA08A	Hammer Cage	1
8.8	9	12891TA09A	Hammer Dog	2
0.5	10	12891TA10	Washer	1
1.6	11	12891TA11	Front Gasket	1
13.4	12	12891TA12	Motor Housing	1
0.4	13	12891TA13	O-Ring	1
3.3	14	12891TA14	Ball Bearing	1
3.6	15	12891TA15	Front Plate	1
0.5	16	12891TA16	Spring Pin	1
16.3	17	12891TA17	Cylinder	1
0.5	18	12891TA18	Spring Pin	1
11.7	19	12891TA19	Rotor	1
0.7	20	12891TA20	Rotor Blade	8
3.6	21	12891TA21	Rear Plate	1
2.5	22	12891TA22	Ball Bearing	1
0.3	23	12891TA23	Screw	1

INDEX NO.	PARTS NO.	DESCRIPTION	Q'TY	UNIT PRICE (US\$/PC) (FOB Taiwan)
24	12891TA24	Reverse Valve	1	1.6
25	12891TA25	O-Ring	1	0.3
26	12891TA26	O-Ring	1	0.3
27	12891TA27	Rear Gasket	1	1.6
28	12891TA28	Rear Cover	1	4.8
29	12891TA29	Reverse Lever	1	1.3
30	12891TA30	Spring	1	0.3
31	12891TA31	Steel Ball	1	0.3
32	12891TA32	Screw	4	0.6
33	12891TA33	Trigger	1	1.6
34	12891TA34	O-Ring	1	0.3
35	12891TA35	Retainer	1	0.5
36	12891TA36	Valve Stem	1	1.2
37	12891TA37	Spring	1	0.7
38	12891TA38	Exhaust Deflector	1	0.7
39	12891TA39	O-Ring	1	0.3
40	12891TA40	Washer	1	0.4
41	12891TA41	Hose Adaptor -18NPT	1	2.2
42		Hose Adaptor -19PT		
43		Hose Adaptor -19PF(BSP)		
44	12891TA42	Front Plate Washer	1	0.7
45	12891TA43	Rear Plate Washer	1	0.7
46				

Consumable parts No .4, 5, 6, 11, 14, 20, 27, 30, 31, 37, 38

HIW-04891T