

BODY REPAIR TOOLS

Panel Beating	98-99
Dollies	100
Spoons & Bumping	101
Body Tool Kits	102-103
Bodyshop Tools Panels / Products	104-110
Panel Repair	111
Cutting & Welding	112-113
Door & Trim	114
Sheet Metal	115
Bodyshop Equipment	116
Bodyshop Tools	117

KEY



DO NOT USE AIR TOOLS



FOR USE WITH PETROL ENGINES



FOR USE WITH DIESEL ENGINES

BELT

FOR USE WITH BELT DRIVEN ENGINES

CHAIN

FOR USE WITH CHAIN DRIVEN ENGINES

Panel Beating Hammers

High quality alloy steel heads with hardened striking surfaces

- Fine quality octagonal wooden shafts fitted as standard
- Wood and steel wedged handles ensure maximum head retention with improved safety
- The heads have a tapered centre allowing the shaft to expand into the head & are secured with a double wedge

Shrinking Hammers

Useful in the final stages of panel finishing when slightly stretched areas of metal can be encountered. In using this type of beater, small amounts of metal are forced into the spaces created by the cross milling. They can also be used on cold aluminium but working on sheet steel will be quicker if heat is applied to the area. Whenever possible, such beating should be carried out on the inside of the panel to minimise resurfacing needed prior to painting. Sykes-Pickavant does not recommend using the same individual tools on aluminium and steel. (See page 104 for further details)

Flat Faced Hammers

Traditional flat faced hammers are designed to construct or reconstruct sheet metal vehicle components, as well as for the removal of small imperfections in sheet metal surfaces. The flat surface minimises distortion and limits the stretching effect of the hammer blow. Flat surface hammers require a high degree of precision so as not to crease the metal surface.

Crowned Faced Hammers

Crowned faced hammers are used for the same general purposes as flat faced hammers but are less likely to cause a crease if the hammer blow is not precise. The crowned face does however, produce more marked stretching around the impact area.

For ease of identification, coloured rings are fitted to the hammer shafts to denote flat or crowned faces

BLUE = Flat Face (Diag 1)

RED = Crowned Face (Diag 2)

BLACK = Shrinking Face (Diag 3)



Diag 1



Diag 2



Diag 3

Spare Parts:

- 05602000 - Replacement Shaft & Wedges

Panel Beater Light Bumping - Flat Face 05680000

- Light-weight, flat face panel beater suitable for applying measured force in areas of light damage or on thinner gauge metal

- **Round Face:** 32mm
- **Square Face:** 25mm
- **Head Width:** 89mm
- **Weight:** 0.37kg



Panel Beater Light Bumping - Crowned Face 05620000

- Light-weight, crowned face panel beater suitable for applying measured force in area of light damage or on thinner gauge metal

- **Round Face:** 32mm
- **Square Face:** 25mm
- **Head Width:** 89mm
- **Weight:** 0.37kg



Panel Beater Standard Bumping - Flat Face 056000V2

- Medium-weight, flat face panel beater suitable for straightening thicker gauge metals where significant corrective force is required

- **Round Face:** 41mm
- **Square Face:** 38mm
- **Head Width:** 97mm
- **Weight:** 0.425kg



Panel Beater Standard Bumping - Crowned Face 056100V2

- Medium-weight, crowned face panel beater suitable for straightening thicker gauge metals where significant corrective force is required

- **Round Face:** 41mm
- **Square Face:** 38mm
- **Head Width:** 97mm
- **Weight:** 0.425kg



Panel Beater Straight Pein & Finish - Flat Face 052900V2

- Medium-weight, flat face finishing panel beater with straight pein

- **Round Face:** 41mm
- **Square Face:** N/A
- **Head Width:** 130mm
- **Weight:** 0.425kg



Panel Beater Straight Pein & Finish - Crowned Face 056500V2

- Medium-weight, crowned face finishing panel beater with straight pein

- **Round Face:** 41mm
- **Square Face:** N/A
- **Head Width:** 130mm
- **Weight:** 0.425kg



Thatcham Approved



Sykes-Pickavant has created a range of Body Repair Tool Kits covering a variety of tasks and many of these tools have been approved by the Motor Industry Research centre at Thatcham. Details of the Thatcham Approved Body Repair Tool Kit along with other repair kits can be seen on pages 102 - 103

Panel Beater Pick & Finishing - Flat Face 053000V2

- Medium-weight flat face panel beater with round point pick head designed to remove low spots when finishing
- **Round Face:** 38mm
- **Square Face:** N/A
- **Head Width:** 135mm
- **Weight:** 0.43kg



Panel Beater Pick & Finishing - Crowned Face 056600V2

- Medium-weight crowned face panel beater with round point pick head designed to remove low spots when finishing
- **Round Face:** 38mm
- **Square Face:** N/A
- **Head Width:** 135mm
- **Weight:** 0.43kg



Panel Beater Curved Pein - Crowned Face 053700V2

- Medium-weight, crowned face finishing panel beater with curved pein for use where access is restricted
- **Round Face:** 41mm
- **Square Face:** N/A
- **Head Width:** 142mm
- **Weight:** 0.425kg



Panel Beater Shrinking & Flat Face Hammer 056900V2

- Medium-weight flat face shrinking hammer, specifically designed for panel beating on slightly stretched areas of metal
- Twin head with 1 x round flat face and 1 x square, cross milled face
- **Round Face:** 41mm
- **Square Face:** 38mm
- **Head Width:** 97mm
- **Weight:** 0.425kg



Panel Beater Double Ended Shrinking Hammer 05280000

- Medium-weight, flat face shrinking hammer, specifically designed for panel beating on slightly stretched areas of metal
- Specially designed cross milled heads improves stretched areas by forcing small amounts of metal into spaces created by cross milling
- **Round Face:** 41mm
- **Square Face:** 38mm
- **Head Width:** 97mm
- **Weight:** 0.425kg



Rubber Faced Mallet 05310000

- Ideal for use on aluminium and may also be used in the forming of panels in sheet steel
- Flat and cone shaped rubber ends
- Constructed with quality hardwood shaft and durable aluminium head
- **Flat Face:** 50mm
- **Coned Face:** 50mm
- **Length:** 306mm
- **Weight:** 0.575kg



Copper / Rawhide Hammer 05320000

- A useful addition to any bodyshop tool kit, handy when refitting rubber boot and door opening seals
- **Round Faces:** 28.5mm
- **Hammer Size:** 2
- **Length:** 306mm
- **Weight:** 1.06kg



Thin Curved Dolly**054301V2**

- Light-weight curved dolly suitable for a wide variety of panel beating tasks - reforming beads and mouldings, reshaping panels, raising low spots

- **Length:** 125mm
- **Width:** 55mm
- **Depth:** 37mm
- **Weight:** 0.90kg

**Thin Toe Dolly****054801V2**

- Light-weight thin toe dolly enables access in difficult to reach areas
- 1 x flat face and 1 x curved face

- **Length:** 115mm
- **Width:** 56mm
- **Depth:** 25mm
- **Weight:** 0.86kg

**Anvil Dolly****054901V2**

- General purpose dolly with two curved faces

- **Length:** 102mm
- **Width:** 72mm
- **Depth:** 62mm
- **Weight:** 1.40kg

**Grid Toe Dolly****05500100**

- Convex curved grid-pattern face which assists in shrinking stretched areas of metal

- **Length:** 120mm
- **Width:** 58mm
- **Depth:** 28mm
- **Weight:** 1.16kg

**Utility Dolly****055201V2**

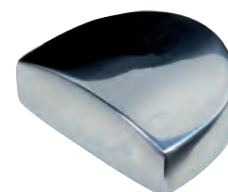
- Double-ended general purpose dolly with two curved faces

- **Length:** 76mm
- **Width:** 57mm
- **Depth:** 58mm
- **Weight:** 1.15kg

**Heel Dolly****05540100**

- Semi-circular model, ideal for rounded and contoured panels
- 1 x flat face and 1 x convex face

- **Length:** 83mm
- **Width:** 63mm
- **Depth:** 36mm
- **Weight:** 1.08kg

**Curved Head Dolly****05560100**

- Double-faced, large head model
- Two curved surfaces

- **Length:** 125mm
- **Width:** 90mm
- **Depth:** 70mm
- **Weight:** 1.30kg

**Round Head Dolly****05570100**

- Double-ended dolly for re-shaping rounded and contoured panels
- 1 x domed and 1 x flat round surface

- **Length:** 56mm
- **Width:** 56mm
- **Depth:** 56mm
- **Weight:** 0.73kg

**Heavy Toe Dolly****055801V2**

- Heavy-weight toe dolly enables access in difficult to reach areas
- 1 x flat face and 1 x curved face

- **Length:** 125mm
- **Width:** 60mm
- **Depth:** 30mm
- **Weight:** 1.37kg



Spoons & Bumping

- Spoons are used for bumping and prying and can also be used instead of a dolly when direct access to the rear of a panel is obstructed. The choice of spoon depends on the original contour of the metal, the amount of access available and the proposed action (i.e. roughing or levelling).



Heavy Duty Pry Spoon 05120100

- For prying, levering and panel beating in areas that are inaccessible to dollies
- Heavy duty pry spoon specially designed for separating outer panels from the inner frame structure

- **Length:** 405mm
- **Width:** 63mm
- **Weight:** 1.48kg



Pry & Surfacing Spoon 05730000

- Specially designed for panel beating work in restricted areas and for separating outer panels from inner frame structure

- **Length:** 295mm
- **Width:** 50mm
- **Weight:** 0.85kg



General Purpose Spoon 05740000

- Multi-purpose double ended spoon which is specially designed for panel beating work where access is restricted. For example separating outer panels from inner frame structure depending on the amount of access available

- **Length:** 295mm
- **Width:** 40mm
- **Weight:** 1.10kg



Angled Surfacing Spoon 05780000

- Multi-purpose surfacing spoon, with specially designed angled head for panel beating work in restricted areas. For example separating outer panels from inner frame structure depending on the amount of access available

- **Length:** 185mm
- **Width:** 45mm
- **Weight:** 1.56kg



Bumping Tool - Flat 05940000

- Flat steel blade with serrated teeth and pvc handle
- Suitable for removing bumps, dents & flattening wavy surfaces
- Ideal for semi-finishing work on body panels
- Milled serrations help prevent metal stretch
- 350 x 35mm



Bumping Tool - Half Round 05950000

- Half round steel blade with serrated teeth and pvc handle
- Suitable for removing bumps, dents and flattening wavy surfaces
- Ideal for semi-finishing work on body panels
- Milled serrations help prevent metal stretch
- 350 x 35mm



Body Repair Set - Starter Kit

05810300

- Versatile kit containing 2 x panel beating hammers, spoon and 3 x dollies
- Ideal as a general purpose starter kit - suitable for performing a wide range of body repair tasks
- Supplied in a flat-pack carton

Contents:

- 056000V2 - Panel Beater Standard Bumping - Flat Face
- 056500V2 - Panel Beater Straight Pein and Finish - Crowned Face
- 055201V2 - Utility Dolly
- 054301V2 - Thin Curved Dolly
- 055801V2 - Heavy Toe Dolly
- 05730000 - Pry & Surfacing Spoon



Body Repair Set - Standard Kit

05800100

- General purpose panel beating kit containing 3 x panel beating hammers, 4 x dollies, 2 x spoons and body blade holder with 1 blade
- Supplied in steel case

Contents:

- 05280000 - Panel Beater Double Ended Shrinking - Flat Face
- 056000V2 - Panel Beater Standard Bumping - Flat Face
- 056500V2 - Panel Beater Straight Pein and Finish - Crowned Face
- 055201V2 - Utility Dolly
- 054301V2 - Thin Curved Dolly
- 055801V2 - Heavy Toe Dolly
- 05500100 - Grid Toe Dolly
- 05730000 - Pry & Surfacing Spoon
- 05740000 - General Purpose Spoon
- 05710000 - Adjustable Body Blade Holder and 1 x Blade (standard flat cut - 9tpi)



Body Repair Set - Master Kit

05840100

- Master panel beating kit containing 8 x panel beating hammers, 5 x dollies, 4 x spoons, 1 x shaping tool and a body blade holder with 1 x blade
- Supplied in steel case

Contents:

- 05280000 - Panel Beater Shrinking Flat Face
- 052900V2 - Panel Beater Straight Pein and Finish Flat Face
- 053000V2 - Panel Beater Pick and Finishing Flat Face
- 053700V2 - Panel Beater Pein and Finish Crowned Face
- 056000V2 - Panel Beater Standard Bumping Flat Face
- 056100V2 - Panel Beater Standard Bumping Crowned Face
- 05620000 - Panel Beater Light Bumping Crowned Face
- 05310000 - Rubber Faced Mallet
- 05500100 - Grid Toe Dolly
- 055201V2 - Utility Dolly
- 054301V2 - Thin Curved Dolly
- 05570100 - Round Head Dolly
- 055801V2 - Heavy Toe Dolly
- 05120100 - Heavy Duty Pry Spoon
- 05730000 - Pry & Surfacing Spoon
- 05740000 - General Purpose Spoon
- 05780000 - Surface Spoon
- 05940000 - Bumping Tool - Flat
- 05710000 - Adjustable Body Blade Holder and 1 x Blade (standard flat cut - 9tpi)



“Thatcham™ Accredited” Body Repair Tool Kit 058500TH



“The first Body Repair Tool Kit to achieve Thatcham™ accreditation”

- General purpose 13 piece set of Body Repair Tools approved by Thatcham™ for Insurance Approved Body Repair work
- Supplied in steel tool box (52800000)

• Contents:

- 052900V2 - Panel Beater Straight Pein and Finish Flat Face
- 053000V2 - Panel Beater Pick and Finishing Flat Face
- 053700V2 - Panel Beater Pein and Finish Crowned Face
- 056900V2 - Panel Beater Flat Face and Shrinking Face
- 054301V2 - Thin Curved Dolly
- 054801V2 - Thin Toe Dolly
- 055201V2 - Utility Dolly
- 05730000 - Pry & Surfacing Spoon
- 05940000 - Bumping Tool - Flat
- 05710100 - Adjustable Body Blade Holder
- 05711100 - 9tpi Standard Cut Body Blade
- 05711200 - 12tpi Fine Cut Body Blade
- 05711500 - 6tpi Plasticut Body Blade



Steel Utility Tool Box - Small 52800000

- Small utility tool box suitable for storing bodyshop tools
- Includes removable tote tray
- Size:
 - Length: 485mm
 - Depth: 155mm
 - Height: 160mm



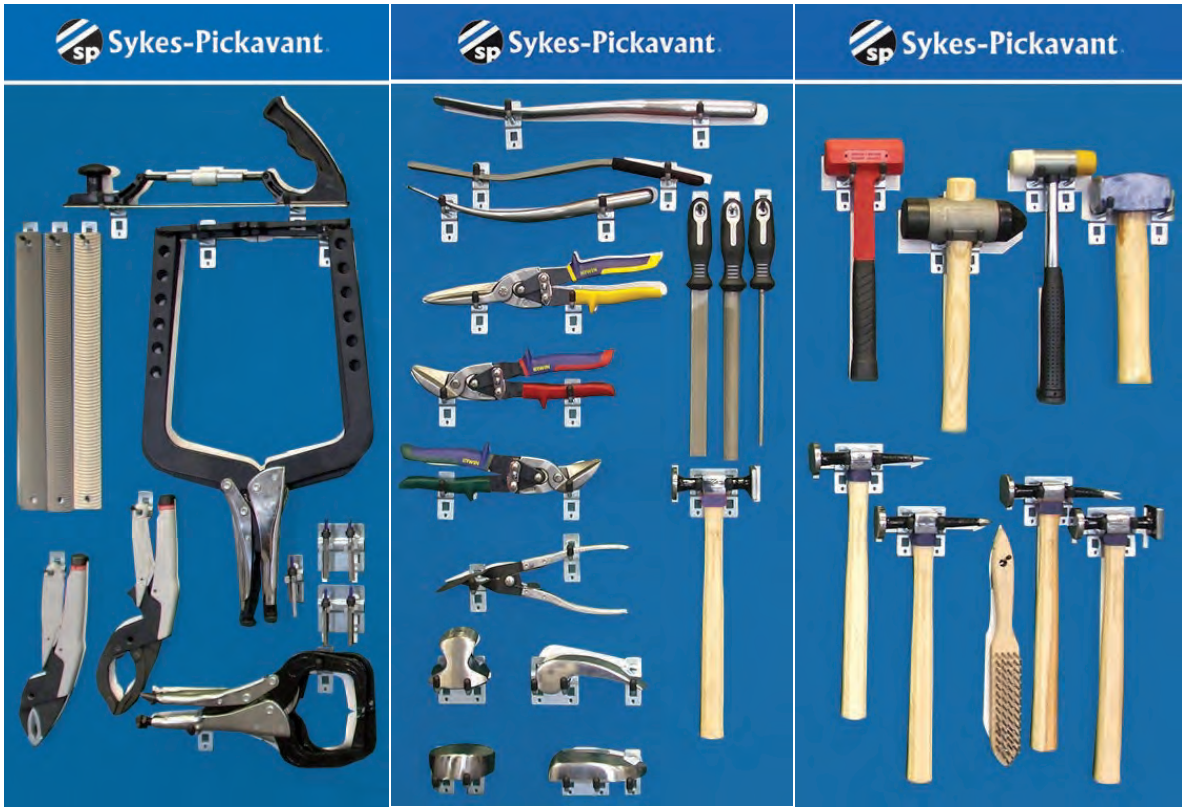
Bodyshop Tools Panel Kits - Aluminium & Steel
05880000

Sykes-Pickavant offer two types of bodyshop tools panel kit - One for use in the steel body shop and one specifically designed for use in the aluminium body shop. It is vital that different tools are used to avoid steel/aluminium cross contamination. Cross contamination can have a negative effect on paintwork and often results in metal corrosion. The tools in each kit are differentiated by either a red band or a laser marking.

ALUMINIUM TOOL PANEL

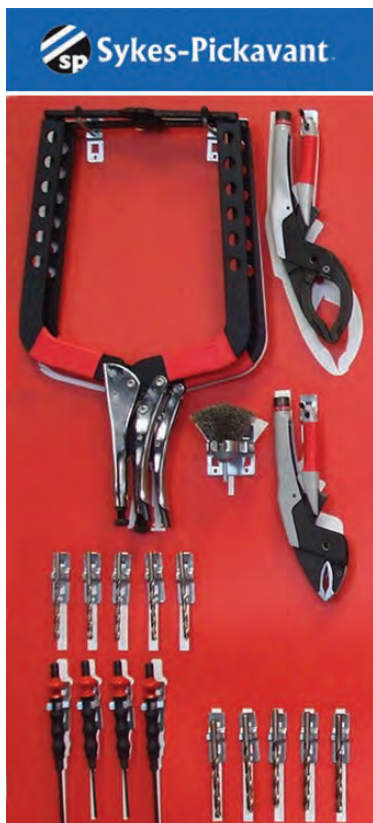


STEEL TOOL PANEL

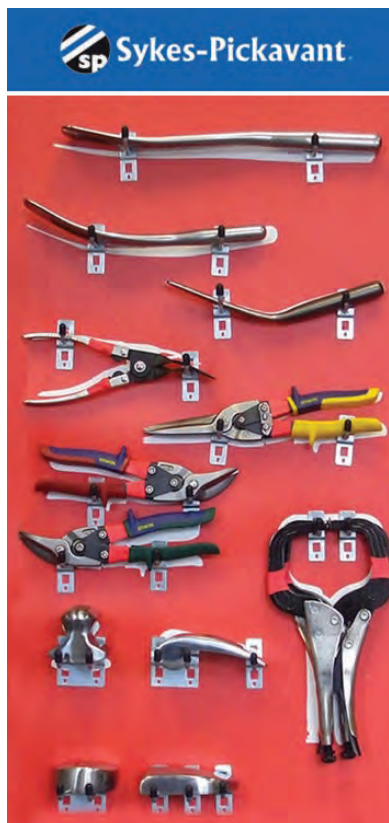


Bodyshop Tools Panel Complete Kit - Aluminium

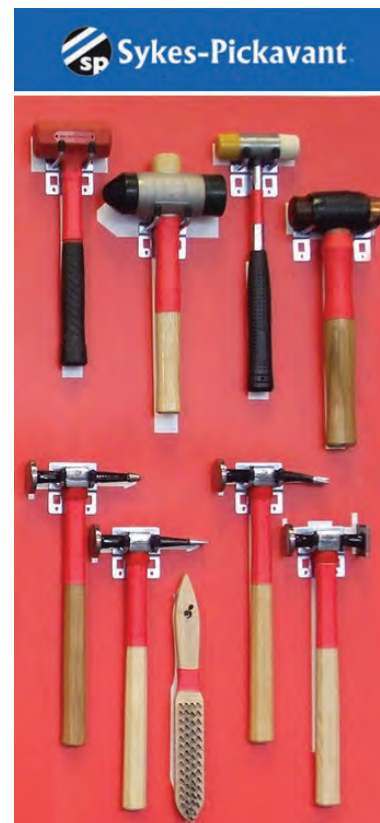
05880000-AL



PANEL 1 (05880100-AL)		
Part No	Description	Qty per Panel
065014-AL	Welding C Clamp 495mm	2
065055-AL	Grip Wrench Straight Jaw 250mm	2
065065-AL	Grip Wrench Large Jaw 290mm	2
040265-AL	CryoCobalt Drill (6.5mm) 5 pack	1
040280-AL	CryoCobalt Drill (8.0mm) 5 pack	1
6904G4-AL	Drift Punch - 3.9mm	2
6904G5-AL	Drift Punch - 4.9mm	2
660938-AL	Stainless Steel Cup Brush	1
05880120-AL	Overlay	1
05880110-AL	Hook Set	1
14025117.11	Panel	1



PANEL 2 (05880200-AL)		
Part No	Description	Qty per Panel
054301V2-AL	Thin Curved Dolly	1
054801V2-AL	Thin Toe Dolly	1
055201V2-AL	Utility Dolly	1
055401-AL	Heel Dolly	1
051201-AL	Heavy Duty Pry Spoon	1
057300-AL	Pry & Surfacing Spoon	1
051000-AL	L Shaped Spoon	1
061200-AL	Offset Snips Straight	1
0609RH-AL	Offset Snips Straight / Left curve	1
0609LH-AL	Offset Snips Straight / Right curve	1
046000-AL	Trim Clip Remover & Plier	1
065011-AL	Welding C Clamp - 280mm	2
05880220-AL	Overlay	1
05880210-AL	Hook Set	1
14025117.11	Panel	1



PANEL 3 (05880300-AL)		
Part No	Description	Qty per Panel
056600V2-AL	Panel Beater Pick & Finishing Crowned Face	1
053700V2-AL	Panel Beater Curved Pein Crowned Face	1
056500V2-AL	Panel Beater Straight Pein & Finish Crowned Face	1
056100V2-AL	Panel Beater Standard Bumping Crowned Face	1
053100-AL	Rubber Faced Mallet	1
053200-AL	Copper / Rawhide Hammer	1
690275-AL	Soft Face Hammer	1
690265-AL	Dead Blow Hammer	1
660936-AL	Wire Hand Brush Stainless Steel	1
05880320-AL	Overlay	1
05880310-AL	Hook Set	1
14025117.11	Panel	1

Note: Panel Size: 985mm high x 455mm wide
For further details regarding individual products please see pages 107 - 110

Bodyshop Tools Panel Complete Kit - Steel

05880000-ST


PANEL 1 (05880100-ST)

Part No	Description	Qty per Panel
05710100	File Blade Holder	1
05711100	Body Blade - Standard Cut 9tpi	5
05711200	Body Blade - Fine Cut 12tpi	5
05711500	Body Blade - Plasticut 6tpi	5
04001100	Zipcut Spot Weld Remover	5
06501100	Welding C Clamp - 280mm	2
06501400	Welding C Clamp - 495mm	2
06505500	Grip Wrench Straight Jaw 250mm	1
06506500	Grip Wrench Large Jaw 290mm	1
05880120-ST	Overlay	1
05880110-ST	Hook Set	1
14025117.11	Panel	1

PANEL 2 (05880200-ST)

Part No	Description	Qty per Panel
054301V2	Thin Curved Dolly	1
054801V2	Thin Toe Dolly	1
055201V2	Utility Dolly	1
05540100	Heel Dolly	1
05120100	Heavy Duty Pry Spoon	1
05730000	Pry & Surfacing Spoon	1
05940000	Bumping Tool - Flat	1
056100V2	Panel Beater Standard Bumping - Crowned Face	1
69016100	200mm Flat Cut File	1
69016300	200mm Half Round File	1
69016500	200mm Round File	1
06120000	Offset Snips Straight	1
0609RH00	Offset Snips Straight / Left curve	1
0609LH00	Offset Snips Straight / Right curve	1
04600000	Trim Clip Remover	1
05880220-ST	Overlay	1
05880210-ST	Hook Set	1
14025117.11	Panel	1

PANEL 3 (05880300-ST)

Part No	Description	Qty per Panel
052900V2	Panel Beater Straight Pein & Finish - Flat Face	1
053000V2	Panel Beater Pick & Finishing - Flat Face	1
053700V2	Panel Beater Curved Pein - Crowned Face	1
056900V2	Panel Beater Shrinking & Flat Face	1
05310000	Rubber Faced Mallet	1
05330000	Club Hammer	1
69027500	Soft Face Hammer	1
69026500	Dead Blow Hammer	1
66093500	Wire Brush - 4 Row	1
05880320-ST	Overlay	1
05880310-ST	Hook Set	1
14025117.11	Panel	1

Note: Panel Size: 985mm high x 455mm wide

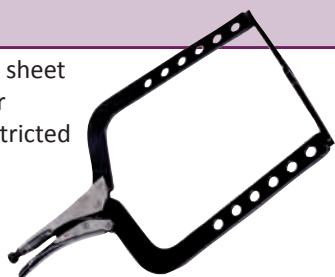
For further details regarding individual products please see pages 107 - 110

The following pages list the products featured on the relevant steel and /or aluminium panel. If you require a specific steel or aluminium variant that is not shown, please contact Customer Services on 01543 679900

Welding C Clamp

06501400 / 065014-AL

- Suitable for holding together sheet metal, body panels and other materials where access is restricted
- Length: 495mm
- Jaw Opening: 300mm
- Jaw Width: 250mm



See page 113 for further details

Grip Wrench - Straight Jaw - 250mm

06505500 / 065055-AL

- One handed operation and smooth action release trigger
- Hardened jaws with 40mm open capacity
- Length: 250mm



Grip Wrench - Large Jaw - 290mm

06506500 / 065065-AL

- One handed operation and smooth action release trigger
- Hardened jaws with 65mm open capacity
- Length: 290mm



CryoCobalt™ Drill - 6.5mm dia - 5 pack

040265-AL

- Ideal for drilling high strength alloy steels, ultra high strength boron steels, as well as aluminium chassis, panels and rivets
- Length: 105mm
- Diameter: 6.5mm



See page 112 for further details

CryoCobalt™ Drill - 8mm dia - 5 pack

040280-AL

- Ideal for drilling high strength alloy steels, ultra high strength boron steels, as well as aluminium chassis, panels and rivets
- Length: 115mm
- Diameter: 8mm



See page 112 for further details

Drift Punch - 3.95mm

6904G4-AL

- Shock absorbing sheathed drift punch
- Comfortable grip ensures a more accurately controlled blow
- Length: 190mm



Drift Punch - 4.95mm

6904G5-AL

- Shock absorbing sheathed drift punch
- Comfortable grip ensures a more accurately controlled blow
- Length: 200mm



Stainless Steel Cup Brush - 70mm

660938-AL

- For use with hand drills when preparing and removing any material from a variety of surfaces



Thin Curved Dolly

054301V2 / 054301V2-AL

- Lightweight curved dolly suitable for a wide variety of panel beating tasks - reforming beads and mouldings, reshaping panels, raising low spots



See page 100 for further details

Thin Toe Dolly

054801V2 / 054801V2-AL

- Lightweight thin toe dolly enables access in difficult to reach areas
- 1 x flat face and 1 x curved face



See page 100 for further details

Utility Dolly

055201V2 / 055201V2-AL

- Double-ended general purpose dolly with two curved faces

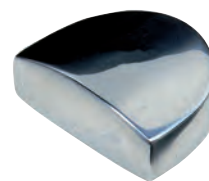


See page 100 for further details

Heel Dolly

05540100 / 055401-AL

- Semi-circular model, ideal for rounded and contoured panels
- 1 x flat face and 1 x convex face



See page 100 for further details

Heavy Duty Pry Spoon

05120100 / 051201-AL

- For prying, levering and panel beating in areas that are inaccessible to dollies
- Heavy duty pry spoon specially designed for separating outer panels from the inner frame structure



See page 101 for further details

Pry & Surfacing Spoon

05730000 / 057300-AL

- Specially designed for panel beating work in restricted areas and for separating outer panels from inner frame structure



See page 101 for further details

L Shaped Spoon

051000-AL

- Slim spoon designed for panel beating work in restricted areas, particularly on smaller vehicles
- Blade features a slow taper along its length



Offset Snips - Straight

06120000 / 061200-AL

- Multi-purpose snips with compound cutting action
- Textured grips and E-Z close latch
- Ideal for cutting sheet metal, vinyl, plastic, rubber and many other applications



Offset Snips - Straight and Left Curved

0609RH00 / 0609RH-AL

- 240mm long with a 3.02 cm length of cut
- Cut capacity of 18g / 1.19mm sheet metal and 22g / 0.84mm stainless steel



Offset Snips - Straight and Right Curved

0609LH00 / 0609LH-AL

- 240mm long with a 3.02 cm length of cut
- Cut capacity of 18g / 1.19mm sheet metal and 22g / 0.84mm stainless steel



Trim Clip Remover and Plier

04600000 / 046000-AL

- For quick removal of clips, fasteners, door trim panels, fascia supports, trim panels
- Large nose allows trim panels to be unhooked with minimal risk of breaking or tearing
- Squeeze prevention pin
- Length: 240mm



Welding 'C' Clamp

06501100 / 065011-AL

- Suitable for holding together sheet metal, body panels and other materials
- Length: 280mm
- Jaw Opening: 0-90mm
- Jaw Width: 55mm



See page 113 for further details

Panel Beater Pick & Finishing - Crowned Face 056600V2-AL

- Medium-weight with round point pick head designed to remove low spots when finishing



See page 99 for further details

Panel Beater Curved Pein - Crowned Face 053700V2 / 053700V2-AL

- Medium-weight crowned face finishing panel beater with curved pein for use where access is restricted



See page 99 for further details

Panel Beater Straight Pein & Finish - Crowned Face 056500V2-AL

- Medium-weight crowned face finishing panel beater with straight pein



See page 98 for further details

Panel Beater Standard Bumping - Crowned Face 056100V2 / 056100V2-AL

- Medium-weight crowned face panel beater suitable for straightening thicker gauge metals where significant corrective force is required



See page 98 for further details

Rubber Faced Mallet 05310000 / 053100-AL

- Ideal for use on aluminium and may also be used in the forming of panels in sheet steel



See page 99 for further details

Copper / Rawhide Hammer 053200-AL

- Ideal when refitting rubber boot and door opening seals



See page 99 for further details

Soft Face Hammer - 12oz 69027500 / 690275-AL

- Ideal for light assembly applications
- Comfortable anti-slip grip



Dead Blow Hammer - 16oz 69026500 / 690265-AL

- Ideal for assembly and maintenance applications
- Composite Handle



Wire Hand Brush - Stainless Steel 660936-AL

- Wooden handle with hardened and tempered stainless steel wire



Wire Hand Brush 66093500

- Wooden handle with hardened and tempered steel wire



Adjustable Body Blade Holder only

05710100

- Adjustable blade holder, suitable for forming & shaping fillers and metal



See page 111 for further details

Body Blades

05711500 / 05711100 / 05711200

- Specially heat treated alloy steel provides hardness with flexibility
- 05711500 - Plasticut - 6tpi
- 05711100 - Standard - 9tpi
- 05711200 - Fine Flat - 12tpi



See page 111 for further details

Zipcut Spot Weld Remover

04001100

- Auto-centering tool for removal of spot welds
- Adjustable centering device enables depth of cut to be controlled



See page 112 for further details

Bumping Tool - Flat

05940000

- Flat steel blade with serrated teeth and pvc handle
- Suitable for removing bumps, dents & flattening wavy surfaces



See page 101 for further details

Flat Cut File - 200mm

69016100

- Rubber coated handle provides maximum comfort and control



Flat

Half Round File - 200mm

69016300

- Rubber coated handle provides maximum comfort and control



Half Round

Round File - 200mm

69016500

- Rubber coated handle provides maximum comfort and control



Round

Panel Beater Straight Pein & Finish - Flat Face

052900V2

- Medium-weight, flat face finishing panel beater with straight pein



See page 98 for further details

Panel Beater Pick & Finishing - Flat Face

053000V2

- Medium-weight flat face panel beater with round point pick head designed to remove low spots when finishing



See page 99 for further details

Panel Beater Shrinking & Flat Face Hammer

056900V2

- Medium-weight flat face shrinking hammer, specifically designed for panel beating on slightly stretched areas of metal



See page 99 for further details

Club Hammer - 1000g

05330000

- Heavy duty club hammer with ash handle
- Conical Wedging
- Length: 260mm



Bodyshop Tools Panels Kit - Personalised Service

Sykes-Pickavant are able to offer a personalised service based on the existing tools that are displayed on each panel.

Choose from:

- Custom coloured panels
- Your logo / company name on each panel heading
- Personalised laser marking on tools

For further information and to discuss the options that are available to you, contact Sykes-Pickavant on 01543 679900

Adjustable Body Blade Holder c/w File Blade

05710000

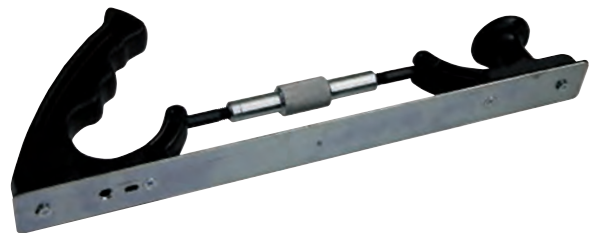
- Adjustable blade holder, suitable for forming & shaping fillers and metal during body repair work
- Steel tension adjuster and base plate
- Supplied with a standard flat cut 9tpi blade
- Compatible with most flat profile 356mm body blades
- Robust construction with steel tension adjuster, sole plate and tough plastic handle
- 2 position handle for vertical or horizontal use
- Other blades also available - see below for details



Adjustable Body Blade Holder only

05710100

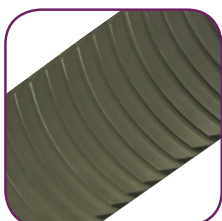
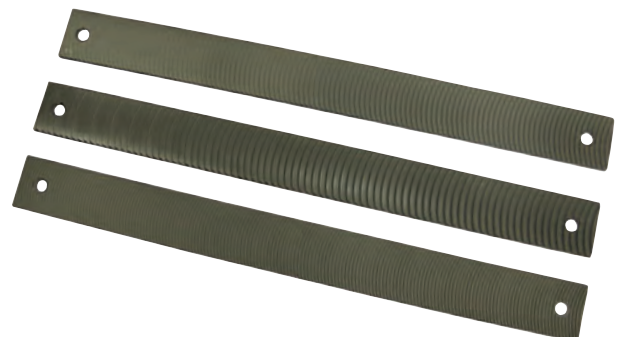
- Adjustable blade holder, suitable for forming & shaping fillers and metal during body repair work
- Steel tension adjuster and base plate
- Compatible with most flat profile 356mm body blades
- Robust construction with steel tension adjuster, sole plate and tough plastic handle
- 2 position handle for vertical or horizontal use
- Blades also available - see below for details



Body Blades

- Specially heat treated alloy steel provides hardness with flexibility
- Length: 356mm
- Precision cut teeth
- Blade edges chamfered
- Maximum deflection of 14mm

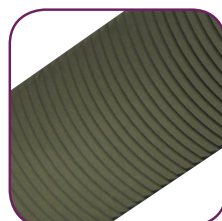
Reference	Description	tpi
05711500	Plasticut Flat	6
05711100	Standard Flat Cut	9
05711200	Fine Flat Cut	12



05711500



05711100



05711200

Zipcut Spot Weld Remover

04001100

- Auto-centering tool for removal of spot welds
- Adjustable centering device enables depth of cut to be controlled
- 5/16" hex shank for use with drill chucks of 3/8" capacity
- Reversible screw-on cutter blade for longer life



Spare Parts:

- 04001400 - Spare Cutters

Spot Weld Drills - High Speed Cobalt Steel

- High speed cobalt steel drills, for removal of spot welds without distortion

Part No.	Type	Length	Diameter
04020100	Stubby	80mm	8mm
04021300	Stubby	70mm	6.5mm



CryoCobalt™ Drill

- CryoCobalt™ Drills are specially designed for drilling very hard metals
- Ideal for drilling high strength alloy steels, ultra high strength boron steels, as well as aluminium chassis, panels and rivets
- Added Cobalt increases micro-sharpness and operating temperatures
- Cryophase process improves flexibility and extends bit operating life
- CryoCobalt™ drills can be re-sharpened

Material: CM-88™ Chrome Moly Cobalt High Heat Steel

Heat Resistance: Up to 1200°F / 650°C

Hardness: 66-68Re

Tip Design: 135° Split Point

Coating: Gold Oxide

Cryophase: Patented thermal cycling cryogenic treatment



Part No.	Length	Diameter
04026500	105mm	6.5mm
04028000	115mm	8mm

Welding 'C' Clamp - 280mm 06501100

- Large capacity deep throat clamp, with small gripping area, for awkward shapes and access
- Suitable for holding together sheet metal, body panels and other materials
- Powerful grip and deep throat ideal for handling awkward shapes encountered when welding, glueing, marking off and template making
- Small gripping area allows close up working and deep throat enables access around bulky and awkward shapes e.g. door sills

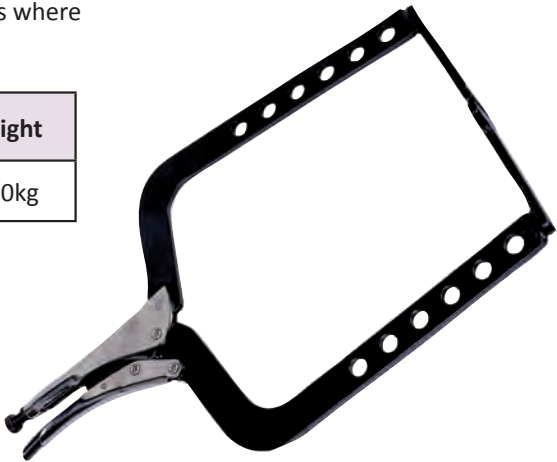
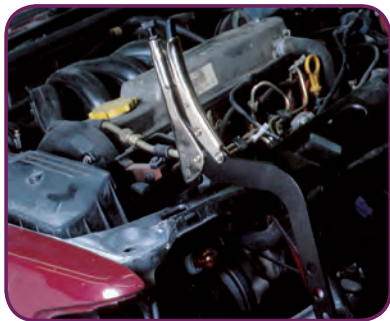
Length	Jaw Opening	Jaw Width	Throat Depth Closed	Weight
280mm	0 - 90mm	55mm	80 - 150mm	0.90kg



Welding 'C' Clamp - 495mm 06501400

- Features as per 06501100 above
- Suitable for holding together sheet metal, body panels and other materials where access is restricted

Length	Jaw Opening	Jaw Width	Throat Depth Closed	Weight
495mm	300mm	250mm	165 - 405mm	1.90kg



Welding Clamp 06501200

- Split jaw locking clamp providing maximum access to working area
- Deep throated locking clamp suitable for holding together sheet metal, body panels and sills whilst welding
- Powerful grip, deep throat and split jaws give maximum visibility and access to working area

Length	Jaw Opening	Jaw Width	Throat Depth Closed	Weight
265mm	63mm	75mm	30mm	0.75kg



Hinge Pin Remover - Hollow Pins**04540000**

- 12mm square bar with 5.5mm jaw opening
- Supplied with a set of three roll pin removers
- Length: 270mm - Width: 16mm - Jaw: 7.5mm

**Spare Parts: (Roll Pin Removers)**

- 04540400 for 3.5mm pins - Length: 106mm (3 Pack)
- 04540500 for 4.5mm pins - Length: 106mm (3 Pack)
- 04540600 for 5.5mm pins - Length: 106mm (3 Pack)
- 04540300 - Set of 3 (1 x 3.5mm, 1 x 4.5mm, 1 x 5.5mm)

Door Skin Crimping Tool**04310000**

- Portable hand held crimping tool suitable for bending and crimping flanges when replacing door skins and body panels
- Tough, replaceable nylon pads prevent damage to door skin when crimping flanges
- Supplied with 50mm wide nylon pad for faster crimping on straight edges
- High quality chrome plated tool with pvc coated handles for comfort



Length	Handles	Jaws - Width	Nylon Block	Weight
310mm	200mm	16mm	50 x 22mm large	0.81kg

Spare Parts:

- 04310270 - 50mm Nylon Pad

**Trim Tool Set****04550000**

- Set of five strong, flexible plastic angled, lever and panel pullers
- Ideal for roof linings, door trims, panel trims and moulding strips
- Designed to enable the safe removal of vehicle trim panels without damage

**Trim Clip Remover and Plier****04600000**

- For quick removal of clips, fasteners, door trim panels, fascia supports, trim panels
- Large nose allows trim panels to be unhooked with minimal risk of breaking or tearing
- Squeeze prevention pin
- Length: 240mm

**Windscreen Wiper Arm Remover****08245000**

- Ideal tool for removing stubborn windscreen wiper arms
- Unique design allows for four different jaw widths to be selected
- Reversible and interchangeable legs
- Removable centrepiece for wider applications coverage
- Capacity from 19 - 36mm

**Impact Driver & Bits Set****040101V2**

- For use with a medium-weight hammer, to loosen stubborn screws and nuts
- Supplied in storage case, with fourteen inter-changeable bits

**Spare Parts:**

- 67065000 - Slotted Blade 5/16 x 36mm
- 67065200 - Slotted Blade 3/8 x 36mm
- 67065400 - Slotted Blade 1/2 x 36mm
- 67066000 - XPT No 1 x 36mm
- 67066200 - XPT No 2 x 36mm
- 67066400 - XPT No 3 x 36mm
- 67066600 - XPT No 4 x 36mm
- 67051270 - Hex Bit 5 x 36mm
- 67051470 - Hex Bit 6 x 36mm
- 67051870 - Hex Bit 10 x 36mm
- 67059670 - T30 Torx Bit
- 67059870 - T40 Torx Bit
- 67060070 - T45 Torx Bit
- 67060270 - T50 Torx Bit

Sheet Metal Cutter - 1.6mm capacity (16SWG) - Bench Mounted

04200000

- Light weight roller type cutter suitable for straight, curved and angled cutting on mild steel metal up to 1.6mm thick
- Reversible ratchet action cuts sheet metal quickly and efficiently & makes angle cutting easier
- Cutter wheels incorporate replaceable shear pins to prevent damage from overloading
- PVC Handle for operator comfort
- Replacement cutter wheels available
- Can also be vice mounted (with 04200100 - vice mounting block)

Capacity	Body	Handle	Wheels	Weight
1.6mm (16swg)	135 x 130 x 60mm	300 x 27 x 6mm	50mm dia	1.75kg



Spare Parts:

- 04200200 - Replacement Cutter Wheels (pair)
- 04200300 - Ratchet Wheel
- 04200400 - Shear Pins (2 Pack)
- 04200500 - Repair Kit

Optional Extra:

- 04200100 - Vice Mounting Block

Sheet Metal Cutter - 3.2mm capacity (10SWG)

04210000

- Heavy duty roller type cutter suitable for straight, curved and angle cutting mild steel sheet metal up to 3.2mm thick
- Includes bracket for safe bench mounting
- Replacement cutter wheels available

Capacity	Body	Handle	Wheels	Weight
3.2mm (10swg)	270 x 170 x 140mm	700 x 19mm dia	75mm dia	7.9kg



Spare Parts:

- 04210200 - Replacement Cutter Wheels (pair)

Offset Snips - Straight

06120000

- Multi-purpose snips with compound cutting action
- Textured grips and E-Z close latch
- Ideal for cutting sheet metal, vinyl, plastic, rubber and many other applications



Offset Snips - Straight and Left Curved

0609RH00

- 240mm long with a 3.02 cm length of cut
- Cut capacity of 18g / 1.19mm sheet metal and 22g / 0.84mm stainless steel



Offset Snips - Straight and Right Curved

0609LH00

- 240mm long with a 3.02 cm length of cut
- Cut capacity of 18g / 1.19mm sheet metal and 22g / 0.84mm stainless steel



Fuel Extractor / Retriever

36600500

- Retrieve fuel following a filling error, removal of tank sender unit, changing or checking the fuel gauge, rinsing the fuel tank during body work etc
- Operates from workshop compressed air (no risk of sparks)
- Mobile 45-litre tank (on wheels)
- Cleanly draws up or pushes out fuel due to a venturi system
- Includes 2 anti-static ground cables, overflow line and 3 fuel probes
- Emptying via the tank filler neck or fuel lines
- Made of stainless steel



Spare Parts:

- | | | |
|---|---|------------------------------|
| • 366005-01 - 40L Reservoir | • 366005-06 - Overflow System Reservoir | |
| • 366005-02 - Air system with gauge | • 366005-07 - Overflow System Reservoir Carrier | |
| • 366005-03 - Quick Connection System Adaptor | • 366005-08 - Wheel | |
| • 366005-04 - Handle | • 366005-09 - Hose | • 366005-11 - Probe - medium |
| • 366005-05 - Probes Carrier | • 366005-10 - Probe - small | • 366005-12 - Probe - large |

30652500 - SPe Bodyshop

Ideal for use in modern self-sufficient Bodyshops

SPe is an advanced electronic handheld tool, which is available in 3 different versions for use on modern vehicles equipped with an EOBD socket, which have a range of on-board Electronic Control Systems (ECU's) fitted for monitoring and controlling critical vehicle functionality.

SPe has its own battery, which is re-charged via a mains charger or else a connected vehicle; this when fully charged can give up to an hour of use as a stand-alone device. Once SPe is switched on, simply select the vehicle to work on and SPe then offers a selection of vehicle specific options for the technician to select from – no confusion over what can and can't be done; the SPe even guides a technician to find the location of the EOBD socket!

SPe Bodyshop version is an invaluable aid to assessing accident damage & estimating the cost of repair to vehicle electronic systems

Allows adjustment / programming following Bodyshop Repair

- Actuator Test (Fans, Mirrors, Windows, Lights, Valves, Pumps)
- Airbag & ECU Enabling & Coding
- Central Locking & Immobilizer & Anti-Theft Control
- Comfort Controls
- Key & Remote Control Coding
- Aircon & Climate Control System Controls
- Body Computer Controls
- CAN Network Status
- Transmission & Gearbox Controls
- ABS / Traction / ESP Controls
- Steering & Suspension System
- Doors / Lights / Seats / Mirror / Parking Controls
- Display Check & Reset

Maintenance & Technical Data

Vehicle Delivery & Acceptance Report - Automatic



Airbag Check



To read more about SPe refer to Page 60

'Vibro-Impact' Air Hammer

90206000

- A unique concept to aid the removal of seized suspension parts
- The 'Vibro-Impact' system allows for the controlled application of force via an air powered Impact Hammer
- Allows the operator to control and gradually increase the force being applied, in order to loosen seized components
- Features a built-in shock-absorber in order to minimise risk of damage if too much pressure is accidentally applied. Low vibration for user comfort
- Supplied with a handy wall mounted storage bracket and a set of four Impact Hammers for variable applications
- **Specification:**
 - Weight: 2.49kg
 - Length: 290mm
 - Air supply: 6.2bar (90psi)
 - Air usage: 114 ltrs / min
 - Stroke: 2200 bpm
 - Noise level: 100dBA



Scan the QR code to watch a video of the 'Vibro-Impact' Air Hammer

Whilst the 'Vibro-Impact' Air Hammer has been designed for use on suspension parts, there are a number of additional applications where its use may prove to be convenient – e.g. Seized or rusted nuts / bolts on any part of the vehicle and seized injectors where there is no need to retain the injector for future use.

Spare Parts:

- 90221000 - Tie Rod Separator Bit
- 90223000 - Ball Joint Separator Bit
- 90222000 - Hammer Bit
- 90224000 - 1/2" Sq Drive Bit

SP Induction Heater +

96020000 - UK Version 96020100 - EU Version

The SP Induction Heater + is a redesign and upgrade of the popular Mini-Ductor II® and uses new engineering technology for increased energy efficiency and ease of use. Now you can use the power of technology with a flameless heat to quickly release corroded or seized components and other metallic parts. All without the damage normally associated with gas torches. Heats in seconds!

Key features of the SP Induction Heater +

- Operates cooler for better efficiency, handling and product longevity
- Long operating cycle time
- Carry Case; with storage for all attachments, fits in tool chests for security
- Integrated CE filter improves handling of product
- Specifically designed for the UK/EU: 230v/6 amp/1000 watt – with full CE certification
- LED work light illuminates work area
- 1 year warranty - Parts/Labour
- A true 1,000 watts max output power available
- Kit includes rope, u-form and pre-formed coil

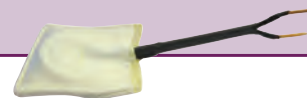


Made by Induction International Inc., a US company, for Sykes-Pickavant

SP Heat Pad

96025000

- Silicone free pad for safe bodyshop use
- Softens the adhesive on mouldings, stripes etc for easy removal



SP Rope Coil

96026000

- Highly adaptable coil allows user to shape to suit
- Use three / four windings of coil for maximum performance



Individual Coils:

Part No.	Coil Size Diameter
96021900	19mm
96022200	22mm
96022600	26mm
96023200	32mm
96023800	38mm
96024500	45mm

Individual Extended Coils:

Part No.	Coil Size Diameter
96031900	19mm (330mm long)
96032200	22mm (330mm long)
96032600	26mm (330mm long)
96033200	32mm (330mm long)
96033800	38mm (330mm long)
96034500	45mm (330mm long)

SP Induction Heater Coil Kit

96015000

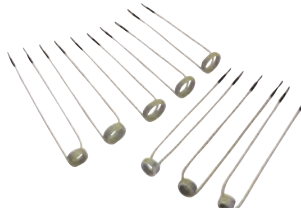
- Contains 8 x popular sizes of interchangeable coils: 19mm, 22mm x 2, 26mm, 32mm, 38mm, 45mm, 22mm - long



SP Induction Heater Extended Coil Kit

96035000

- Contains 8 x extra long interchangeable coils (330mm long): 19mm, 22mm x 2, 26mm x 2, 32mm, 38mm, 45mm
- Supplied in plastic tube





**FOR THE LATEST
PRODUCT INFORMATION
VISIT OUR NEW WEBSITE:
www.sykes-pickavant.com**