



**ATLAS
TAPES**

ATHENS
68 Varis Avenue
16673 Voula, Greece
Tel.: +30 210 8995388

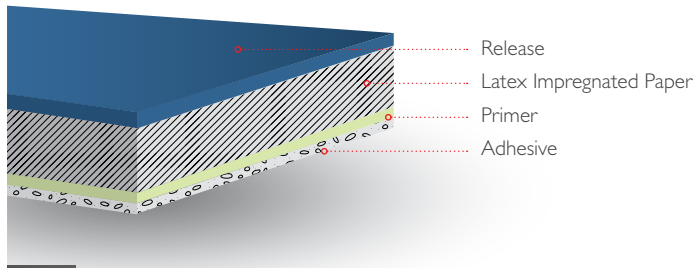
ATALANTI
3rd km Skala Atalanti Road
35200 Atalanti, Greece
Tel.: +30 22330 23725

www.atlas-tapes.gr
info@atlas-tapes.gr

MASKING TAPE

Hot Melt HM 7220

TECHNICAL DATA SHEET



DESCRIPTION:

Economic high-grade masking tape with synthetic rubber adhesive. Product is suitable for all DIY applications, domestic and professional painting, simple and more complex jobs.

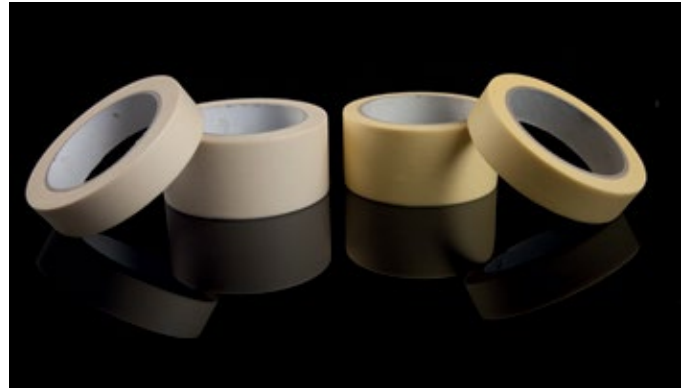
APPLICATIONS:

- DIY
- Window sealing
- General masking
- Domestic DIY and Industrial general painting
- Sealing
- Fixing
- Light duty packaging
- Window framing and sealing

PROPERTIES:

- Must be operated in room temperature
- Various surface options to cover special requirements
- Excellent tape to tape adhesion
- High initial tack
- Easy tear
- Excellent conformability
- Easy curving
- Easy application on uneven surfaces

ALL ABOUT TAPES



NOMINAL VALUES:

Backing

Impregnated Crepe Paper

Adhesive

Hot Melt (Solvent-free)

Tensile Strength MD

80 ± 15 (N/25mm)

TM 5004 by Afera

Elongation at Break MD

8 ± 2 (%)

TM 5004 by Afera

Adhesion to Steel

Over 7 (N/25mm)

TM 5001 by Afera

Paper thickness

85 ± 15 (mic)

Total thickness

100 ± 20 (mic)

Application Range

General purpose

Paper Colors

White

Sharp Yellow

Adhesive Color

White