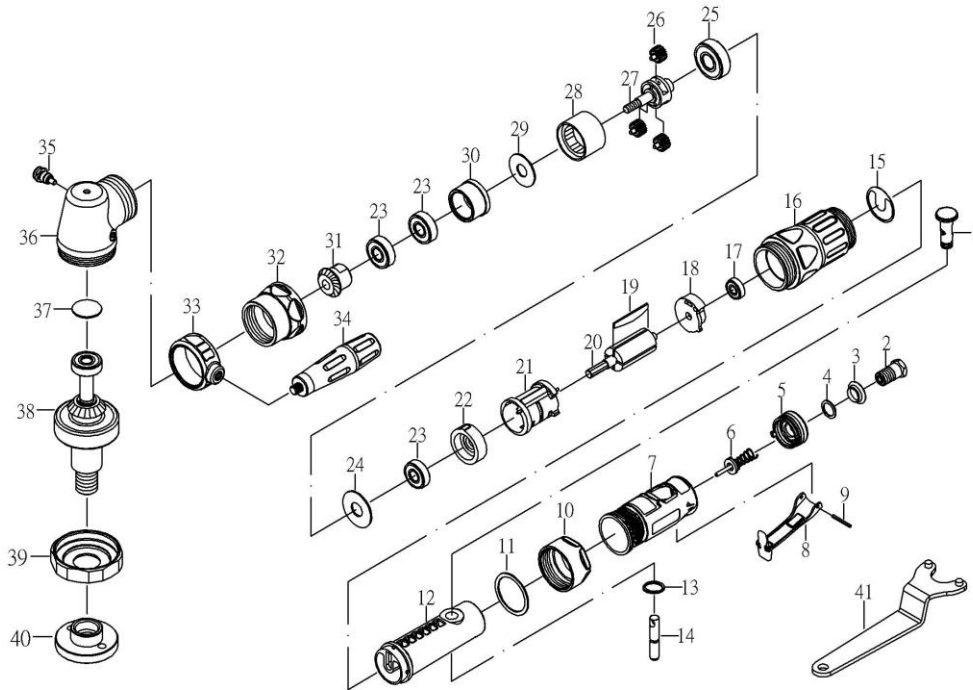


7" ANGLE POLISHER



PARTS LIST

NO	PART NO	DESCRIPTION	QTY	UNIT PRICE (US\$/PC) (FOB Taiwan)
1	ST87101AS	REGULATOR SET	1	1.2
2	ST87104	INLET BUSHING	1	1.7
3	ST20036	MUFFLER BODY	1	0.4
4	LDB250R43	WASHER	1	0.7
5	ST87106AS	EXHAUST SLEEVE SET	1	1.6
6	ST288315AS	VALVE SET	1	0.9
7	ST87113	PROTECTING RUBBER	1	2.6
8	ST200A13	LEVER	1	2.8
9	12012.1	PIN	1	0.3
10	ST85005	CLAMP NUT	1	6.3
11	ST85006	WASHER	1	0.7
12	ST87118	HOUSING	1	8
13	OB-30	SNAP RING	1	0.3
14	ST87157AS	VALVE STEM SET	1	0.5
15	ST87120	PACKING	1	0.4
16	ST87121-1	HOUSING	1	10.6
17	21024	BEARING (608ZZ)	1	2.3
18	ST87123	REAR PLATE	1	4.2
19	ST85031	ROTOR BLADE	5	0.6
20	ST87125	ROTOR	1	13.1
21	ST87128AS	CYLINDER SET	1	25.5

Consumable parts No. 6, 17, 19, 20, 23, 26, 28, 31, 38

NO	PART NO	DESCRIPTION	QTY	UNIT PRICE (US\$/PC) (FOB Taiwan)
22	ST87129	FRONT PLATE	1	6.6
23	24531A	BEARING (6200ZZ)	3	2.6
24	ST87131	WASHER	1	0.7
25	ST87036A	BEARING (6202ZZ)	1	3.4
26	ST87135AS	IDLER GEAR SET (16T)	3	3.9
27	ST87136	GEAR PLATE	1	19
28	ST87137	THREAD RING GEAR (42T)	1	10.4
29	ST87159	WASHER (15.7*25.8*1.8T)	1	1
30	ST87138	BEARING BUSHING	1	4.2
31	ST87239	BEVEL GEAR (15T)	1	10.9
32	ST87140-1	CLAMP NUT	1	5.3
33	ST87141-1	HANDLE LINK	1	3.1
34	BT80438-12.5	HANDLE	1	2.8
35	ST87144AS	SPINDLE LOCK SET	1	2.6
36	ST87143A-1AS	ANGLE HOUSING SET	1	11.6
37	70412-1	SPACER	1	0.4
38	ST87255AS	SHAFT SET	1	31.7
39	ST87161	CLAMP NUT	1	9
40	ST77153	DISC NUT (5/8")	1	2.3
41	BT87057.1	DISC SPANNER (180mm)	1	3.4
				0.2

HAS-872N

DEC. 2023